

Locating dimensions for an enclosed control device is simple:

1. Find the device's NEMA Size/IEC Frame Size/Lighting Poles within the Box References pages and read across to its Box No.
2. Find that Box No. (numeral or letter) in the Box Dimension pages.

### NEMA Full Voltage Control—Freedom

#### Contactors

##### Type 1 Freedom Contactors

##### Non-Reversing Contactors—without Control Power Transformers

NEMA Size (Poles)	Box No.	Shipping Weight Lbs (kg)
00 (2P, 3P, 4P)	1	5.25 (2.4)
0 (2P, 3P)	1	5.25 (2.4)
1 (2P, 3P, 4P, 5P)	1	7.93 (3.6)
2 (2P, 3P, 4P, 5P)	1	8.5 (3.9)
3 (2P, 3P)	4	35 (16)
4 (2P, 3P)	4	47 (21)
5	10	113 (51)
6	F1E	325 (148)
7	F1E	①
8	F1E	①
9	F1E	①

##### Non-Reversing Contactors—with Control Power Transformers

NEMA Size (Poles)	Box No.	Shipping Weight Lbs (kg)
00 (2P, 3P, 4P)	2	12 (5.4)
0 (2P, 3P)	2	12 (5.4)
1 (2P, 3P, 4P, 5P)	2	12.2 (5.5)
2 (2P, 3P, 4P, 5P)	2	12.8 (5.8)
3 (2P, 3P)	4	40 (18)
4 (2P, 3P)	4	52 (24)
5	10	120 (54)
6	F1E	335 (152)
7	F1E	①
8	F1E	①
9	F1E	①

##### Three-Pole Reversing Contactors—without Control Power Transformers

NEMA Size (Poles)	Box No.	Shipping Weight Lbs (kg)
00	1	7.8 (3.5)
0	1	8 (3.6)
1	3	11 (5.0)
2	3	12 (5.4)
3	4	67 (30)
4	4	154 (70)
5	10	170 (77)
6	F1E	425 (193)
7	F1E	①
8	F1E	①
9	F2E	①

##### Type 3R, 4/4X, 12 Freedom Contactors

##### Non-Reversing Contactors—without Control Power Transformers

NEMA Size (Poles)	Box No.	Shipping Weight Lbs (kg)
00	5	14 (6.4)
0 (2P, 3P, 4P)	5	14 (6.4)
1 (2P, 3P, 4P, 5P)	5	15 (6.8)
2 (2P, 3P, 4P, 5P)	5	15.5 (7.0)
3 (2P, 3P)	8	45 (20)
4 (2P, 3P)	8	56 (25)
5	10	140 (64)
6	F1E	385 (175)
7	F1E	①
8	F1E	①
9	F1E	①

##### Non-Reversing Contactors—with Control Power Transformers

NEMA Size (Poles)	Box No.	Shipping Weight Lbs (kg)
00	5	18 (8.2)
0 (2P, 3P, 4P)	5	18 (8.2)
1 (2P, 3P, 4P, 5P)	6	19 (8.6)
2 (2P, 3P, 4P, 5P)	6	19.5 (8.9)
3 (2P, 3P)	8	52 (24)
4 (2P, 3P)	8	63 (29)
5	10	147 (67)
6	F1E	405 (184)
7	F1E	①
8	F1E	①
9	F1E	①

##### Three-Pole Reversing Contactors—with or without Control Power Transformers

NEMA Size (Poles)	Box No.	Shipping Weight Lbs (kg)
00	6	18 (8.2)
0	6	18 (8.2)
1	6	19 (8.6)
2	6	19 (8.6)
3	8	47 (21)
4	9	69 (31)
5	10	170 (77)
6	F1E	495 (225)
7	F1E	①
8	F1E	①
9	F2E	①

#### Notes

All Type 7 and 9, see **Tab 9**.

① Consult factory.

**Non-Combination Starters**

**Type 1 Freedom Non-Combination Starters**

**Non-Reversing Starters—without Control Power Transformers**

NEMA Size	Box No.	Shipping Weight Lbs (kg)
00	1	7 (3.2)
0	1	7.1 (3.2)
1	1	7.9 (3.6)
2 (AN19)	1	11.5 (5.2)
2 (AN16)	2	8.5 (3.9)
3	4	35 (16)
4	4	47 (21)
5	10	139 (63)
6	F1E	360 (163)
7	F1E	Ⓢ
8	F1E	Ⓢ
9	F1E	Ⓢ

**Non-Reversing Starters—with Control Power Transformers**

NEMA Size	Box No.	Shipping Weight Lbs (kg)
00	3	15 (6.8)
0	3	15 (6.8)
1	3	16 (7.3)
2	3	16.2 (7.4)
3	4	42 (19)
4	4	54 (25)
5	10	146 (66)
6	F1E	385 (175)
7	F1E	Ⓢ
8	F1E	Ⓢ
9	F1E	Ⓢ

**Reversing Starters—without Control Power Transformers**

NEMA Size	Box No.	Shipping Weight Lbs (kg)
00	2	8 (3.6)
0	2	8 (3.6)
1	3	13 (5.9)
1 with top adders	3	13.4 (6.1)
2	3	15 (6.8)
3	4	43 (20)
4	9	65 (30)
5	10	165 (75)
6	F1E	450 (204)
7	F1E	Ⓢ
8	F2E	Ⓢ
9	F2E	Ⓢ

**Reversing Starters—with Control Power Transformers**

NEMA Size	Box No.	Shipping Weight Lbs (kg)
00 with top adders	3	15 (6.8)
0	3	15 (6.8)
1 with top adders	3	17 (7.7)
2	3	19 (8.6)
3	4	50 (23)
4	9	72 (33)
5	10	172 (78)
6	F1E	495 (225)
7	F1E	Ⓢ
8	F2E	Ⓢ
9	F2E	Ⓢ

**Type 3R, 4/4X, 12 Freedom Non-Combination Starters**

**Non-Reversing Starters—without Control Power Transformers**

NEMA Size	Box No.	Shipping Weight Lbs (kg)
0	5	14.3 (6.5)
1	5	15.3 (6.9)
2	6	16 (7.3)
3	8	46 (21)
4	8	60 (27)
5	10	150 (68)
6	F1E	415 (188)
7	F1E	Ⓢ
8	F1E	Ⓢ
9	F1E	Ⓢ

**Non-Reversing Starters—with Control Power Transformers**

NEMA Size	Box No.	Shipping Weight Lbs (kg)
0	6	18 (8.2)
1	6	19 (8.6)
2	6	20 (9)
3	8	53 (24)
4	8	67 (30)
5	10	157 (71)
6	F1E	Ⓢ
7	F1E	Ⓢ
8	F1E	Ⓢ
9	F1E	Ⓢ

**Reversing Starters—with or without Control Power Transformers**

NEMA Size	Box No.	Shipping Weight Lbs (kg)
0	7	18.5 (8.4)
1	7	19.5 (8.9)
2	7	21 (10)
3	8	48 (22)
4	9	72 (33)
5	10	175 (79)
6	F1E	525 (238)
7	F1E	Ⓢ
8	F2E	Ⓢ
9	F2E	Ⓢ

**Notes**

All Type 7 and 9, see **Tab 9**.

Ⓢ Consult factory.

**Combination Starters—NEMA Size****Type 1 Freedom and A200 Combination Starters****Non-Reversing— with and without Control Power Transformers**

NEMA Size (Device)	Box No.	Shipping Weight Lbs (kg)
0	A	37 (17)
1	A	38 (17)
2	A	39 (18)
3	C	72 (33)
4 (HMCP)	C	90 (41)
4 (disconnect switch)	D	150 (68)
5	E	180 (82)
6	F1E	435 (197)
7	F2E	①
8	F2E	①
9	F2E	①

**Reversing— with and without Control Power Transformers**

NEMA Size (Device)	Box No.	Shipping Weight Lbs (kg)
0	B	42 (19)
1	B	43 (20)
2	B	44 (20)
3	C	84 (38)
4	D	173 (79)
5	F1E	①
6	F1E	550 (250)
7	F2E	①
8	F2E	①
9	①	①

**Non-Reversing— Oversized**

NEMA Size (Device)	Box No.	Shipping Weight Lbs (kg)
0-1-2	B	44 (20)

**Type 1 Freedom Non-Reversing Combination Starters—Narrow Enclosure****NEMA 1 Enclosed**

NEMA Size	Box No.	Shipping Weight Lbs (kg)
0-1-2	I	35 (16)

**NEMA 12 Enclosed**

NEMA Size	Box No.	Shipping Weight Lbs (kg)
0-1-2	I	36 (16)

**NEMA 12 Enclosed with Safety Door Interlock**

NEMA Size	Box No.	Shipping Weight Lbs (kg)
0-1-2	I	37 (17)

**Type 3R, 4/4X, 12 Freedom Combination Starters****Non-Reversing— with and without Control Power Transformers**

NEMA Size (Device)	Box No.	Shipping Weight Lbs (kg)
0	A	37 (17)
1	A	38 (17)
2	A	39 (18)
3	C	72 (33)
4 (HMCP)	C	90 (41)
4 (disconnect switch)	D	150 (68)
5	E	180 (82)
6	F1E	435 (197)
7	F2E	①
8	F2E	①
9	F2E	①

**Reversing— with and without Control Power Transformers**

NEMA Size (Device)	Box No.	Shipping Weight Lbs (kg)
0	B	42 (19)
1	B	43 (20)
2	B	44 (20)
3	C	84 (38)
4	D	173 (79)
5	E	550 (250)
6	F1E	①
7	F2E	①
8	F2E	①
9	②	①

**Non-Reversing— Oversized**

NEMA Size (Device)	Box No.	Shipping Weight Lbs (kg)
0-1-2	B	44 (20)

**Notes**All Type 7 and 9, see **Tab 9**.

① Consult factory.

**Multispeed Starters—Freedom****Non-Combination Multispeed Starters****Class 33: Two-Speed  
Two-Winding**

Size	Box No.	Shipping Weight Lbs (kg)
<b>Type 1</b>		
0	2	8 (3.6)
1–2	3	11 (5.0)
3	4	67 (30)
4	9	154 (70)
5	E	170 (77)
6	F1E	335 (152)
<b>Type 3R, 4X, 12</b>		
0	6	18 (8.2)
1–2	7	18 (8.2)
3	8	75 (34)
4	9	170 (77)
5	E	190 (86)
6	F1E	375 (170)

**Class 34: Two-Speed  
One-Winding, Constant  
or Variable Torque**

Size	Box No.	Shipping Weight Lbs (kg)
<b>Type 1</b>		
0–2	3	19 (8.6)
3	9	50 (23)
4	E	270 (123)
5	F1E	360 (163)
6	F1E	①
<b>Type 3R, 4X, 12</b>		
0–2	7	28 (13)
3	9	58 (26)
4	E	278 (126)
5	F1E	370 (168)
6	F1E	①

**Class 35: Two-Speed  
One-Winding, Constant  
Horsepower**

Size	Box No.	Shipping Weight Lbs (kg)
<b>Type 1</b>		
0–2	3	19 (8.6)
3	9	50 (23)
4	E	270 (123)
5	F1E	360 (163)
6	F1E	①
<b>Type 3R, 4X, 12</b>		
0–2	7	28 (13)
3	9	58 (26)
4	E	278 (126)
5	F1E	370 (168)
6	F1E	①

**Combination Multispeed Starters****Class 36: Two-Speed  
Two-Winding— with  
Disconnect Switch**

Size	Box No.	Shipping Weight Lbs (kg)
<b>Type 1</b>		
0–2	B	15 (6.8)
3	C	82 (37)
4	D	174 (79)
5	F1E	190 (86)
6	F1E	355 (161)
<b>Type 3R, 4X, 12</b>		
0–2	B	22 (10)
3	C	90 (41)
4	D	190 (86)
5	F1E	210 (95)
6	F1E	375 (170)

**Class 39: Two-Speed  
Two-Winding— with HMCP**

Same as Class 36 table.

**Class 37: Two-Speed  
One-Winding, Constant or  
Variable Torque— with  
Disconnect**

Size	Box No.	Shipping Weight Lbs (kg)
<b>Type 1</b>		
0–2	B	27 (12)
3	C	102 (46)
4	E	320 (145)
5	F1E	428 (194)
6	F1E	①
<b>Type 3R, 4X, 12</b>		
0–2	B	35 (16)
3	C	110 (50)
4	E	327 (148)
5	F1E	438 (199)
6	F1E	①

**Class 38: Two-Speed  
One-Winding, Constant  
Horsepower— with  
Disconnect**

Same as Class 37 table.

**Class 40: Two-Speed  
One-Winding, Constant or  
Variable Torque— with  
Disconnect**

Same as Class 37 table.

**Class 41: Two-Speed  
One-Winding, Constant  
Horsepower— with HMCP**

Same as Class 37 table.

**Notes**All Type 7 and 9, see **Tab 9**.

① Consult factory.

### IEC Control—XT

**Note:** Contact Eaton for Box Dimensions not shown on **Pages V10-T14-13 to V10-T14-31.**

#### Type 1, 3R, 4, 4X, 12 XT Non-Combination Starters

##### Class 09: FVNR Starters (Non-Combination)

IEC Size (Frame/Amps)	Box No.	Shipping Weight kg (Lbs)
B-H/7-32 A	1	3.2 (7)
B-H/7-32 A	5A	6.4 (14)
B-H/7-32 A	5P	4.5 (10)
J-L/40-65 A	5A	18.6 (41)
J-L/40-65 A	5P	17.7 (39)
M-Q/80-150 A	8	15.9 (35)

##### Class 10: FVR Starters (Non-Combination)

IEC Size (Frame/Amps)	Box No.	Shipping Weight kg (Lbs)
B-H/7-32 A	1	5.9 (13)
B-H/7-32 A	5A	6.8 (15)
B-H/7-32 A	5P	5.0 (11)
J-L/40-65 A	2	18.2 (40)
J-L/40-65 A	6A	24.5 (45)
J-L/40-65 A	6P	19.1 (42)
M-Q/80-125 A	4	22.7 (50)
M-Q/80-150 A	8	18.6 (41)

##### Class 11: FVNR Starters (Non-Combination with CPT)

IEC Size (Frame/Amps)	Box No.	Shipping Weight kg (Lbs)
B-H/7-32 A	2	6.4 (14)
B-H/7-32 A	5A	8.4 (19)
B-H/7-32 A	5P	6.6 (15)
J-L/40-65 A	2	19.5 (43)
J-L/40-65 A	6A	23.2 (51)
J-L/40-65 A	6P	21.8 (48)
M-Q/80-125 A	4	23.6 (52)
M-Q/80-150 A	8	24.1 (53)

#### Type 1, 3R, 4, 4X, 12 XT Fusible/Non-Fusible Starters

##### Class 19: FVNR Combination with Disconnect Switch

IEC Size (Frame/Amps)	Box No.	Shipping Weight kg (Lbs)
B-J/7-40 A	7A	8.6 (19)
B-J/7-40 A	7P	6.8 (15)
K-N/50-105 A	8	24.1 (53)
K-N/50-105 A	8P	22.2 (49)

##### Class 19: FVNR Combination with Disconnect Switch and Fuseblock

IEC Size (Frame/Amps)	Box No.	Shipping Weight kg (Lbs)
B-J/7-40 A	7A	13.6 (30)
B-J/7-40 A	7P	11.8 (26)
K-M/65-85 A	8	25 (55)
K-M/65-85 A	8P	23.2 (51)

##### Class 20: FVR Combination with Disconnect Switch

IEC Size (Frame/Amps)	Box No.	Shipping Weight kg (Lbs)
B-J/7-40 A	7A	9.1 (20)
B-J/7-40 A	7P	7.3 (16)
K-N/50-105 A	8	26.3 (58)
K-N/50-105 A	8P	25 (55)

##### Class 20: FVR Combination with Disconnect Switch and Fuseblock

IEC Size (Frame/Amps)	Box No.	Shipping Weight kg (Lbs)
B-J/7-40 A	7A	14.1 (31)
B-J/7-40 A	7P	12.3 (27)
K-M/65-85 A	8	25.4 (56)
K-M/65-85 A	8P	23.6 (52)

#### Type 1, 3R, 4, 4X, 12 XT HMCP Combination Starters

##### Class 25: FVNR Combination with HMCP

IEC Size (Frame/Amps)	Box No.	Shipping Weight kg (Lbs)
B-H/7-32 A	7A	10 (23)
B-H/7-32 A	7P	8.2 (18)
J-L/40-65 A	7A	11 (24)
J-L/40-65 A	7P	8.9 (20)
M-Q/80-125 A	8	31.8 (70)

##### Class 26: FVR Combination with HMCP

IEC Size (Frame/Amps)	Box No.	Shipping Weight kg (Lbs)
B-H/7-32 A	7A	12 (26)
B-H/7-32 A	7P	10 (22)
J-L/40-65 A	7A	13 (29)
J-L/40-65 A	7P	11 (25)
M-Q/80-125 A	8	31.8 (70)

#### Type 1, 3R, 4, 4X, 12 XT Combination Motor Controllers (CMCs)

##### Class 76: Self Protected Starter (CMC)

IEC Size (Frame/Amps)	Box No.	Shipping Weight kg (Lbs)
B-H/up to 32 A	K	6.8 (15)
B-H/up to 32 A	5P	5.4 (12)

##### Class 77: Self Protected Starter (CMC) with CPT

IEC Size (Frame/Amps)	Box No.	Shipping Weight kg (Lbs)
B-H/up to 32 A	K	9.5 (21)
B-H/up to 32 A	6P	7.0 (17)

##### Class 78: Reversing Self Protected Starter (CMC)

IEC Size (Frame/Amps)	Box No.	Shipping Weight kg (Lbs)
B-H/7-32 A	K	7.0 (16)
B-H/7-32 A	5P	5.2 (12)

## Lighting Contactors

### Non-Combination

#### Type 1 Non-Combination Lighting Contactors—Electrically Held—CN35

##### Non-Reversing Contactors—without Control Power Transformers

Ampere Size (Poles)	Box No.	Shipping Weight Lbs (kg)
10 A (2P, 3P, 4P)	1	5 (2.3)
20 A (2P, 3P, 4P)	1	5.2 (2.4)
20 A (6P, 9P, 10P, 12P, 20P)	3	9 (4.1)
30 A (2P, 3P)	1	5.3 (2.4)
30 A (4P, 5P, 6P, 9P, 10P, 12P, 20P)	3	9.5 (4.3)
30 A (9P, 12P) with top adders	3	9.7 (4.4)
60 A (2P, 3P, 4P)	1	7 (3.2)
60 A (5P, 6P, 9P, 10P, 12P)	3	9.5 (4.3)
60 A (4P, 5P) with top adders	3	10 (4.5)
100 A (2P, 3P)	4	35 (16)
100 A (4P, 5P, 6P, 9P)	4	60 (27)
200 A (2P, 3P)	4	70 (32)
200 A (4P, 5P, 6P)	10	133 (60)
300 A (2P, 3P)	10	113 (51)
300 A (4P, 5P, 6P)	10	136 (62)
400 A (2P, 3P)	10	125 (57)

##### Non-Reversing Contactors—with Control Power Transformers

Ampere Size (Poles)	Box No.	Shipping Weight Lbs (kg)
10 A (2P, 3P, 4P) with top adders	2	11 (5.0)
20 A (2P, 3P, 4P, 5P, 6P) with top adders	2	13.1 (5.9)
20 A (9P, 10P, 12P, 20P)	3	13.5 (6.1)
20 A (9P, 12P) with top adders	3	13.5 (6.1)
30 A (2P, 3P, 4P, 5P, 6P) with top adders	2	13.1 (5.9)
30 A (9P, 10P, 12P, 20P)	3	13.9 (6.3)
30 A (9P, 12P) with top adders	3	14.1 (6.4)
60 A (2P, 3P) with top adders	3	14 (6.4)
60 A (6P, 9P, 10P, 12P)	3	14 (6.4)
100 A (2P, 3P)	4	39 (18)
100 A (4P, 5P, 6P, 9P)	4	67 (30)
200 A (2P, 3P)	10	117 (53)
200 A (4P, 5P, 6P)	10	140 (64)
300 A (2P, 3P)	10	120 (54)
300 A (4P, 5P, 6P)	10	143 (65)
400 A (2P, 3P)	10	132 (60)

#### Type 1 Non-Combination Lighting Contactors—Magnetically Latched—A202

##### Non-Reversing Contactors—without Control Power Transformers

Ampere Size (Poles)	Box No.	Shipping Weight Lbs (kg)
30 A (2P, 3P, 4P, 5P)	2	8.5 (3.9)
30 A (6P, 8P, 10P, 12P)	3	13 (5.9)
30 A (20P)	4	35 (16)
60 A (2P, 3P, 4P, 5P)	2	8.7 (3.9)
60 A (6P, 8P, 10P, 12P)	3	13.5 (6.1)
60 A (20P)	4	40 (18)
100 A (2P, 3P, 4P, 5P)	4	40 (18)
100 A (6P, 8P, 10P, 12P)	9	85 (39)
100 A (20P)	9	100 (45)
200 A (2P, 3P, 4P, 5P)	4	46 (21)
200 A (6P, 8P, 10P, 12P)	9	95 (43)
200 A (20P)	9	110 (50)
300 A (2P, 3P)	10	115 (52)
400 A (2P, 3P)	10	125 (57)

##### Non-Reversing Contactors—with Control Power Transformers

Ampere Size (Poles)	Box No.	Shipping Weight Lbs (kg)
30 A (2P, 3P, 4P, 5P) with top adders	2	12.5 (5.7)
30 A (6P, 8P, 10P, 12P)	3	17 (7.7)
30 A (20P)	4	39 (18)
60 A (2P, 3P, 4P, 5P) with top adders	2	12.7 (5.8)
60 A (6P, 8P, 10P)	3	17.5 (7.9)
60 A (12P)	9	87 (39)
60 A (20P)	4	44 (20)
100 A (2P, 3P, 4P, 5P)	4	47 (21)
100 A (6P, 8P, 10P, 12P)	9	92 (42)
100 A (20P)	9	107 (49)
200 A (2P, 3P, 4P, 5P)	4	53 (24)
200 A (6P, 8P, 10P, 12P)	9	102 (46)
200 A (20P)	9	117 (53)
300 A (2P, 3P)	10	122 (55)
400 A (2P, 3P)	10	132 (60)

#### Type 1 Non-Combination Lighting Contactors—C30CN<sup>①</sup>

##### Lighting Contactors—without Control Power Transformers

Ampere Size (Poles)	Box No.	Shipping Weight Lbs (kg)
30 A (2–12P)	2	9 (4.1)

##### Lighting Contactors—with Control Power Transformers

Ampere Size (Poles)	Box No.	Shipping Weight Lbs (kg)
30 A (2–12P)	2	13.5 (5.9)

#### Type 3R, 4X and 12 Non-Combination Lighting Contactors—C30CN<sup>①</sup>

##### Lighting Contactors—without Control Power Transformers

Ampere Size (Poles)	Box No.	Shipping Weight Lbs (kg)
30 A (2–12)	6	14 (6.4)

##### Lighting Contactors—with Control Power Transformers

Ampere Size (Poles)	Box No.	Shipping Weight Lbs (kg)
30 A (2–12)	7	20 (9.1)

#### Type 3R, 4/4X, 12 Non-Combination Lighting Contactors—Electrically Held—CN35

##### Non-Reversing Contactors—without Control Power Transformers

Ampere Size (Poles)	Box No.	Shipping Weight Lbs (kg)
10 A (2P, 3P, 4P, 5P, 6P)	5	12 (5.4)
10 A (9P, 10P, 12P, 20P)	7	20 (9.1)
20 A (2P, 3P, 4P, 5P)	5	12 (5.4)
20 A (6P)	5	14 (6.4)
20 A (9P, 10P, 12P, 20P)	7	20 (9.1)
30 A (2P, 3P, 4P)	5	13 (5.9)
30 A (5P, 6P)	6	14 (6.4)
30 A (9P, 10P, 12P, 20P)	7	20 (9.1)
60 A (2P, 3P, 4P)	5	13 (5.9)
60 A (5P, 6P)	6	16 (7.3)
60 A (9P, 10P, 12P)	7	22 (10)
100 A (2P, 3P)	8	49 (22)
100 A (4P, 5P, 6P, 9P)	8	57 (26)
200 A (2P, 3P)	8	110 (50)
300 A (2P, 3P)	10	113 (51)
400 A (2P, 3P)	10	125 (57)

##### Non-Reversing Contactors—with Control Power Transformers

Ampere Size (Poles)	Box No.	Shipping Weight Lbs (kg)
10 A (2P, 3P, 4P, 5P, 6P)	5	16 (7.3)
10 A (9P, 10P, 12P, 20P)	7	20 (9)
20 A (2P, 3P, 4P, 5P)	5	16 (7.3)
20 A (6P, 9P, 10P, 12P, 20P)	7	24 (11)
30 A (2P, 3P, 4P)	6	18 (8.2)
30 A (5P, 6P)	6	18 (8.2)
30 A (9P, 10P, 12P, 20P)	7	24 (11)
60 A (2P, 3P)	6	21 (10)
60 A (4P, 5P, 6P)	6	23 (10)
60 A (9P, 10P, 12P)	7	22 (10)
100 A (2P, 3P)	8	56 (25)
100 A (4P, 5P, 6P, 9P)	8	64 (29)
200 A (2P, 3P)	8	117 (53)
300 A (2P, 3P)	10	120 (54)
400 A (2P, 3P)	10	132 (60)

#### Type 3R, 4/4X, 12 Non-Combination Lighting Contactors—Magnetically Latched—A202

##### Non-Reversing Contactors—without Control Power Transformers

Ampere Size (Poles)	Box No.	Shipping Weight Lbs (kg)
30 A (2P, 3P, 4P, 5P)	5	13 (5.9)
30 A (6P, 8P, 10P, 12P)	7	21 (10)
30 A (20P)	8	46 (21)
60 A (2P, 3P, 4P, 5P)	5	14 (6.4)
60 A (6P, 8P, 10P, 12P)	7	22 (10)
60 A (20P)	8	48 (22)
100 A (2P, 3P, 4P, 5P)	8	50 (23)
100 A (6P, 8P, 10P, 12P)	9	58 (26)
100 A (20P)	10	100 (45)
200 A (2P, 3P, 4P, 5P)	8	52 (24)
200 A (20P)	10	105 (48)
300 A (2P, 3P)	10	113 (51)
400 A (2P, 3P)	10	125 (57)

##### Non-Reversing Contactors—with Control Power Transformers

Ampere Size (Poles)	Box No.	Shipping Weight Lbs (kg)
30 A (2P, 3P, 4P, 5P) w/top adder	6	12.5 (5.7)
30 A (6P, 8P, 10P, 12P)	7	17 (7.7)
30 A (20P)	8	39 (18)
60 A (2P, 3P, 4P, 5P) w/top adder	6	12.7 (5.8)
60 A (6P, 8P, 10P)	7	17.5 (7.9)
60 A (12P)	9	87 (39)
60 A (20P)	8	44 (20)
100 A (2P, 3P, 4P, 5P)	8	47 (21)
100 A (6P, 8P, 10P, 12P)	9	92 (42)
100 A (20P)	9	107 (49)
200 A (2P, 3P, 4P, 5P)	8	53 (24)
200 A (6P, 8P, 10P, 12P)	9	102 (46)
200 A (20P)	9	117 (53)
300 A (2P, 3P)	10	122 (55)
400 A (2P, 3P)	10	132 (60)

#### Notes

All Type 7 and 9, see **Tab 9**.

<sup>①</sup> Consult factory for combination enclosures.

**Combination****Type 1 Combination Lighting Contactors****Electrically Held—Non-Reversing (3P Only)—with or without Control Power Transformers**

Ampere Size	Box No.	Shipping Weight Lbs (kg)
30 A	A	35 (16)
60 A	A	36 (16)
100 A	C	65 (30)
200 A with disconnect switch	D	110 (50)
200 A with thermal magnetic breaker	E	150 (68)
300 A	E	160 (73)
400 A	E	170 (77)

**Type 3R, 4/4X, 12 Combination Lighting Contactors****Electrically Held—Non-Reversing (3P only)—with or without Control Power Transformers**

Ampere Size (Device)	Box No.	Shipping Weight Lbs (kg)
30 A	A	35 (16)
60 A	A	36 (16)
100 A	C	65 (30)
200 A with disconnect switch	D	110 (50)
200 A with thermal magnetic breaker	E	150 (68)
300 A	E	160 (73)
400 A	E	170 (77)

**Solid-State Reduced Voltage Starters****Non-Combination Solid-State Reduced Voltage**

Rating	SSRV	Non-Combination Box No. ①
37 A	S801+/S811+	7A
66 A	S801+/S811+	7A
105 A	S801+/S811+	7A
135 A	S801+/S811+	B1
180 A	S801+/S811+	C
240 A	S801+/S811+	②
304 A	S801+/S811+	②
360 A	S801+/S811+	②
420 A	S801+/S811+	E
500 A	S801+/S811+	E
650 A	S801+/S811+	E
720 A	S801+/S811+	E
850 A	S801+/S811+	E
1000 A	S801+/S811+	F2E

**Magnetically Latched—Non-Reversing (3P Only)—with or without Control Power Transformers**

Ampere Size	Box No.	Shipping Weight Lbs (kg)
30 A	A	35 (16)
60 A	A	36 (16)
100 A	C	65 (30)
200 A with disconnect switch	D	110 (50)
200 A with thermal magnetic breaker	E	150 (68)
300 A	E	140 (64)
400 A	E	190 (86)

**Magnetically Latched—Non-Reversing (3P Only)—with or without Control Power Transformers**

Ampere Size (Device)	Box No.	Shipping Weight Lbs (kg)
30 A	A	35 (16)
60 A	A	36 (16)
100 A	C	65 (30)
200 A with disconnect switch	D	110 (50)
200 A with thermal magnetic breaker	E	150 (68)
300 A with disconnect switch	72 in	375 (170)
300 A with thermal magnetic breaker	E	160 (73)
400 A with disconnect switch	72 in	425 (193)
400 A with thermal magnetic breaker	E	210 (95)

**Combination Solid-State Reduced Voltage**

Rating	SSRV	Combination with Fuses Box No. ①	Combination with HMCP Box No. ①
37 A	S801+/S811+	B1	A1 ③
66 A	S801+/S811+	C	A1
105 A	S801+/S811+	D	B1
135 A	S801+/S811+	D	C
180 A	S801+/S811+	E	E
240 A	S801+/S811+	F1E	E
304 A	S801+/S811+	F1E	E
360 A	S801+/S811+	F1E	E
420 A	S801+/S811+	F1E	E
500 A	S801+/S811+	F1E	E
650 A	S801+/S811+	F1E	F1E
720 A	S801+/S811+	F1E	F1E
850 A	S801+/S811+	F1E	F1E
1000 A	S801+/S811+	F2E	F2E

**Notes**All Type 7 and 9, see **Tab 9**.① Enclosure space will also accommodate for an **IT** Power Supply, 2 four-pole relays, CPT, and terminal blocks. Also includes space for a DNA module or MOV.② Contact Eaton for box dimensions not shown on **Pages V10-T14-13 to V10-T14-31**.

③ Same as footnote ①, but CPT is not included. Upsize to B1 enclosure to include space for a CPT and a full voltage bypass contactor.



**Reduced Voltage Starters—Freedom****Type 1, 3R, 4/4X, 12 Freedom Reduced Voltage Enclosures****Class 42: Autotransformer—  
Non-Combination**

Size	Box No.	Shipping Weight Lbs (kg)
<b>Type 1</b>		
2-4	E2	124 (56)
5	F1E	885 (402)
6 <sup>①</sup>	F1E	1220 (554)
6 <sup>②</sup>	F2E	1400 (636)
7	F2E	③
8	F2E	③
9	③	③
<b>Type 3R, 4X, 12</b>		
2-4	E2	149 (68)
5	F1E	1010 (459)
6 <sup>①</sup>	F1E	1345 (611)
6 <sup>②</sup>	F2E	1525 (692)
7	F2E	③
8	F2E	③
9	③	③

**Class 43: Autotransformer  
with Disconnect**

Same as Class 42 table.

**Class 44: Autotransformer  
with HMCP**

Same as Class 42 table.

**Class 45: Part Winding—  
Non-Combination**

Size	Box No.	Shipping Weight Lbs (kg)
<b>Type 1</b>		
2PW	3	25 (11)
3PW-4PW	9	47 (21)
5PW	E	125 (47)
6PW	F1E	780 (354)
7PW	F2E	③
8PW	F2E	③
<b>Type 3R, 4X, 12</b>		
2PW	7	75 (34)
3PW-4PW	9	95 (43)
5PW	E	180 (82)
6PW	F1E	880 (400)
7PW	F2E	③
8PW	F2E	③

**Class 46: Part Winding—  
with Disconnect**

Size	Box No.	Shipping Weight Lbs (kg)
<b>Type 1</b>		
2PW	C	68 (31)
3PW	D	162 (74)
4PW	E	230 (104)
5PW <sup>①</sup>	F1E	440 (200)
6PW <sup>②</sup>	F1E	440 (200)
6PW	F2E	515 (234)
7PW	F2E	③
8PW	F2E	③
<b>Type 3R, 4X, 12</b>		
2PW	C	88 (40)
3PW	D	190 (86)
4PW	E	270 (123)
5PW <sup>①</sup>	F1E	530 (241)
6PW <sup>②</sup>	F1E	620 (281)
6PW	F2E	③
7PW	F2E	③
8PW	F2E	③

**Class 47: Part Winding—  
with Thermal Magnetic Trip  
Circuit Breaker**

Same as Class 46 table.

**Classes 48 and 51: Wye  
Delta— Non-Combination**

Size	Box No.	Shipping Weight Lbs (kg)
<b>Type 1</b>		
2YD-4YD	E	185 (84)
5YD <sup>①</sup>	F1E	605 (275)
6YD <sup>②</sup>	F1E	635 (288)
6YD	F2E	715 (325)
7YD	F2E	③
8YD	F2E	③
<b>Type 3R, 4X, 12</b>		
2YD-4YD	E	225 (102)
5YD <sup>①</sup>	F1E	705 (320)
6YD <sup>②</sup>	F1E	735 (334)
6YD	F2E	830 (377)
7YD	F2E	③
8YD	F2E	③

**Classes 49 and 52: Wye  
Delta— with Disconnect**

Same as Classes 48 and 51 table.

**Classes 50 and 53: Wye  
Delta— with Thermal  
Magnetic Trip Circuit  
Breaker**

Same as Classes 48 and 51 table.

**Notes**

- ① Non-combination and breaker.
- ② Fusible.
- ③ Consult factory.

## Pump Panels

### Freedom Type 3R—Pump Panels

NEMA Size	Box No.	Shipping Weight Lbs (kg)
1 Narrow	P1	35 (16)
2 Narrow	P1	35 (16)
1	P3	75 (34)
2	P3	75 (34)
3	P3	75 (34)
4	P5	120 (54)
5	P7	150 (68)
6	F1E	350 (159)
7	F2E	425 (193)

### Irrigation Pump Panels—Top Entry

Size	HMCPE/BKR		Fused C362
	Box No.	Box No.	Box No.
1	8	8	8
2	8	8	8
2-1/2	8	8	8
3	8	8	9
3-1/2	8	8	9
4	9	—	—
<b>SSOL Option</b>			
1	8	8	8
2	8	8	8
2-1/2	8	8	8
3	8 <sup>①</sup>	8 <sup>①</sup>	9
3-1/2	8 <sup>①</sup>	8 <sup>①</sup>	9
4	9	—	—

### Irrigation Pump Panels—Bottom Entry

Size	HMCPE/BKR		Fused C362
	Box No.	Box No.	Box No.
1	8	8	8
2	8	8	8
2-1/2	8	8	8
3	8	8	9
3-1/2	8	8	9
4	9	—	—
<b>SSOL Option</b>			
1	8	8	8
2	8	8	8
2-1/2	8	8	8
3	8 <sup>①</sup>	8 <sup>①</sup>	9
3-1/2	8 <sup>①</sup>	8 <sup>①</sup>	9
4	9	—	—

## Duplex Pump Panels

### Type 1, 3R, 4X, 12 Duplex Pump Panels Non-Combination

NEMA Size	Box No.	Shipping Weight Lbs (kg)
0-2	G	44 (20)
3-4	G1	120 (54)
5-6	F1E	405 (184)

### Type 1, 3R, 4X, 12 Duplex Pump Panels Combination

NEMA Size	Box No.	Shipping Weight Lbs (kg)
0-2	H	75 (34)
3-4	H1 <sup>②</sup>	180 (82)
5-6	F1E	425 (193)

## HVAC Control

### Type 1 HVAC Starters

NEMA Size	Box No.	Shipping Weight Lbs (kg)
<b>Type 1</b>		
0-2	7	18 (8.2)
<b>Type 3R, 12</b>		
0-2	7	18.5 (8.4)
<b>Type 1</b>		
3	8	46 (21)
<b>Type 3R, 12</b>		
3	8	48 (22)

#### Notes

All Type 7 and 9, see **Tab 9**.

<sup>①</sup> Irrigation pump panels with a Generation 2 solid-state overload are sized in a Box 8. Those with the Generation 1 overload are sized in a Box 9.

<sup>②</sup> Contact Eaton for box dimensions not shown on **Pages V10-T14-13 to V10-T14-31**.

### Vacuum Break Non-Combination

#### *Type 1 Enclosed—Non-Combination Vacuum Contactors and Starters*

Non-Reversing Contactors and Starters—with or without Control Power Transformers

NEMA Size	Box No.	Shipping Weight Lbs (kg)
4	4	47 (21)
5	10	135 (61)
6	E	235 (107)

Reversing Contactors—with or without Control Power Transformers

NEMA Size	Box No.	Shipping Weight Lbs (kg)
4	9	54 (25)
5	10	145 (66)
6	E	245 (111)

#### *Type 3R, 4/4X, 12 Enclosed—Non-Combination Vacuum Contactors and Starters*

Non-Reversing Contactors and Starters—with or without Control Power Transformers

NEMA Size	Box No.	Shipping Weight Lbs (kg)
4	8	67 (30)
5	10	150 (68)
6	E	250 (114)

Reversing Contactors—with or without Control Power Transformers

NEMA Size	Box No.	Shipping Weight Lbs (kg)
4	9	72 (33)
5	10	175 (79)
6	E	275 (125)

### Combination

#### *Type 1 Enclosed—Combination Vacuum Starters*

Non-Reversing Starters: Fusible or Non-Fusible Disconnect—with or without Control Power Transformers

NEMA Size	Box No.	Shipping Weight Lbs (kg)
4	D	150 (68)
5	E	180 (82)
6	F1E	280 (127)

Non-Reversing Starters: HMCP or Circuit Breaker—with or without Control Power Transformers

NEMA Size	Box No.	Shipping Weight Lbs (kg)
4	C	90 (41)
5	E	180 (82)
6	F1E	280 (127)

#### *Type 3R, 4/4X, 12 Enclosed—Combination Vacuum Starters*

Non-Reversing Starters: Fusible or Non-Fusible Disconnect—with or without Control Power Transformers

NEMA Size	Box No.	Shipping Weight Lbs (kg)
4	D	150 (68)
5	E	180 (82)
6	F1E	280 (127)

Non-Reversing Starters: HMCP or Circuit Breaker—with or without Control Power Transformers

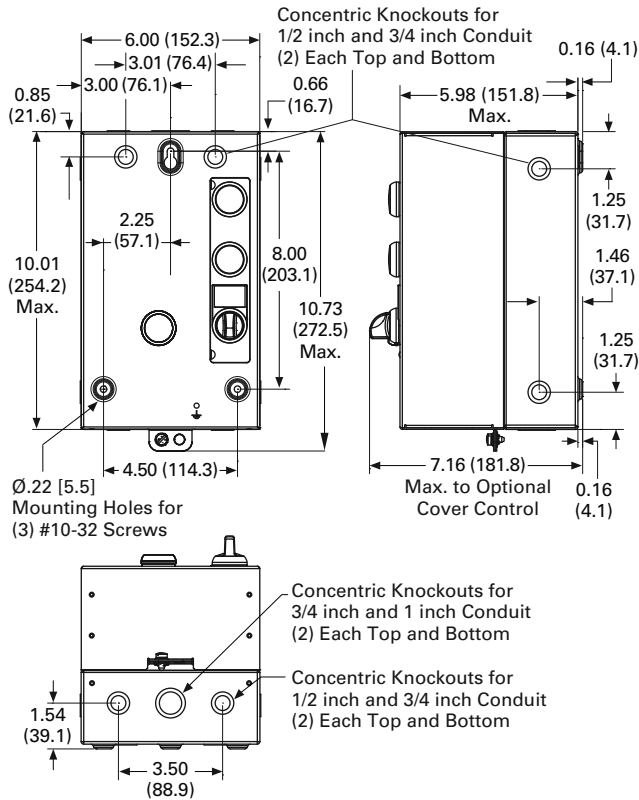
NEMA Size	Box No.	Shipping Weight Lbs (kg)
4	C	90 (41)
5	E	180 (82)
6	F1E	280 (127)

**Note**

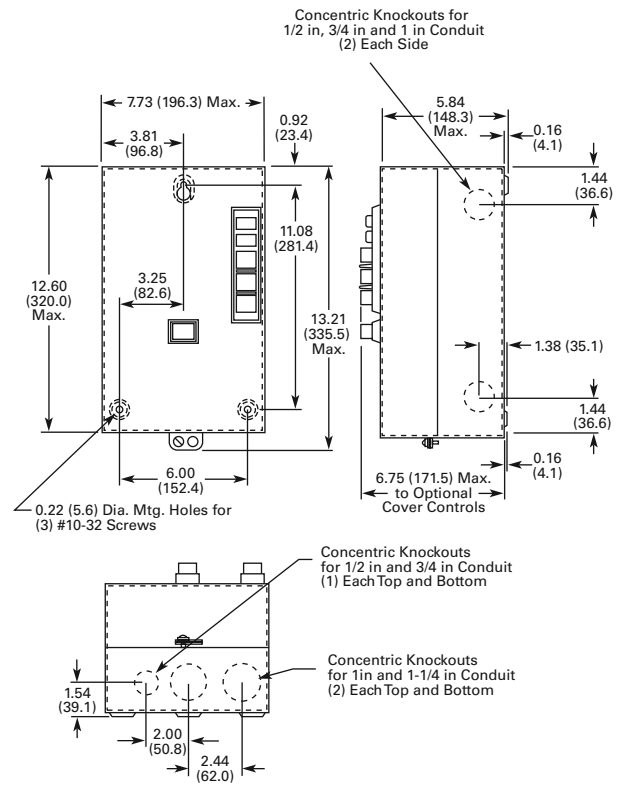
All Type 7 and 9, see **Tab 9**.

Approximate Dimensions are in Inches (mm)

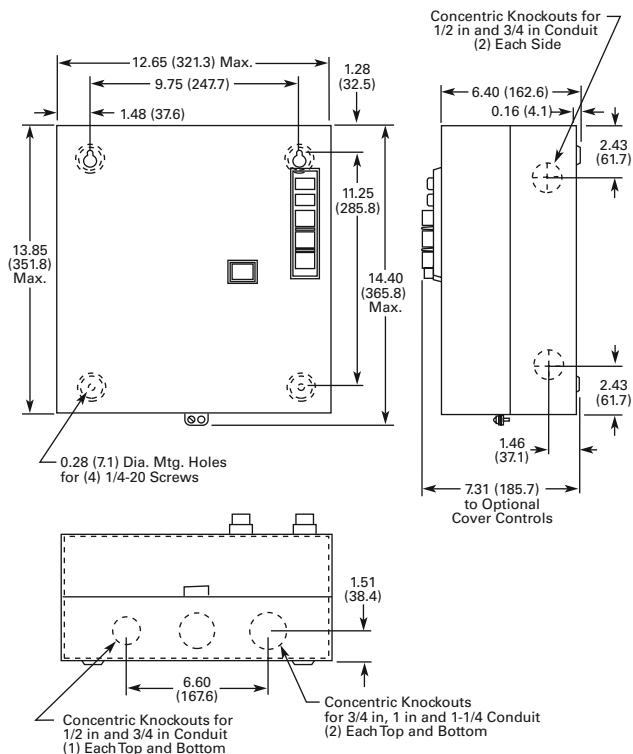
**Box 1, Type 1—6.00W x 10.01H x 5.98D**



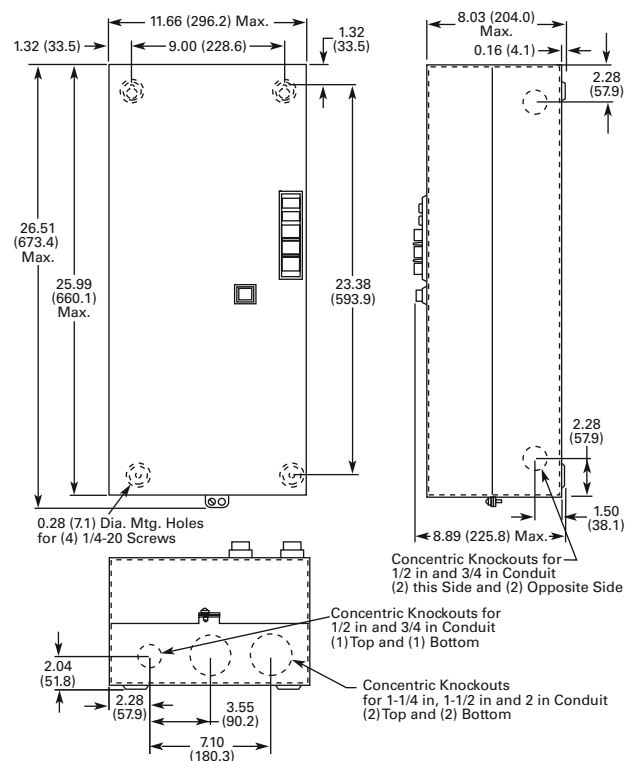
**Box 2, Type 1—7.73W x 12.60H x 5.84D**



**Box 3, Type 1—12.65W x 13.85H x 6.40D**



**Box 4, Type 1—11.66W x 25.99H x 8.03D**

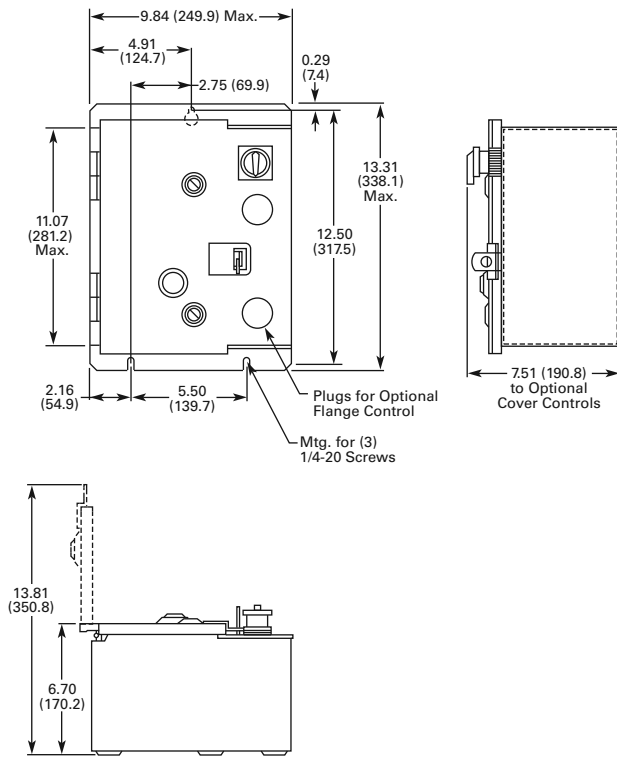


# 14.2 Enclosed Dimensions

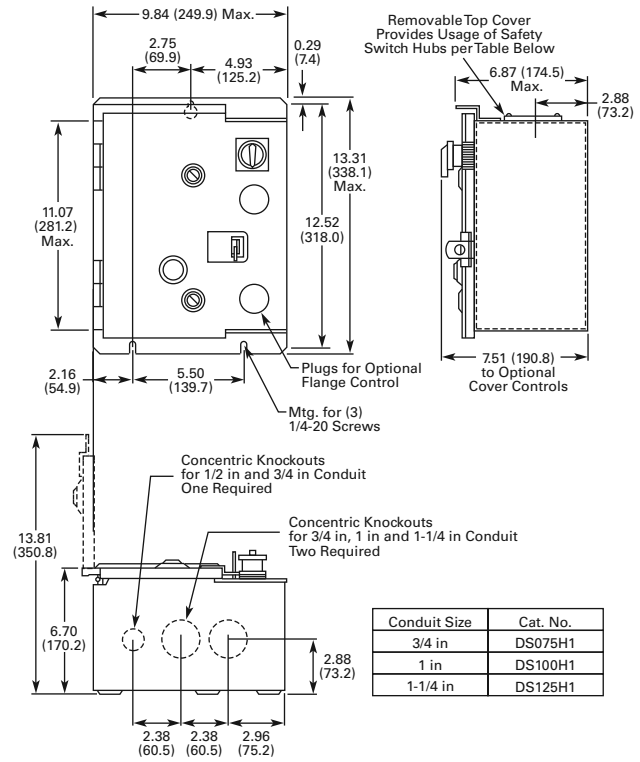
## Box Dimensions

Approximate Dimensions are in Inches (mm)

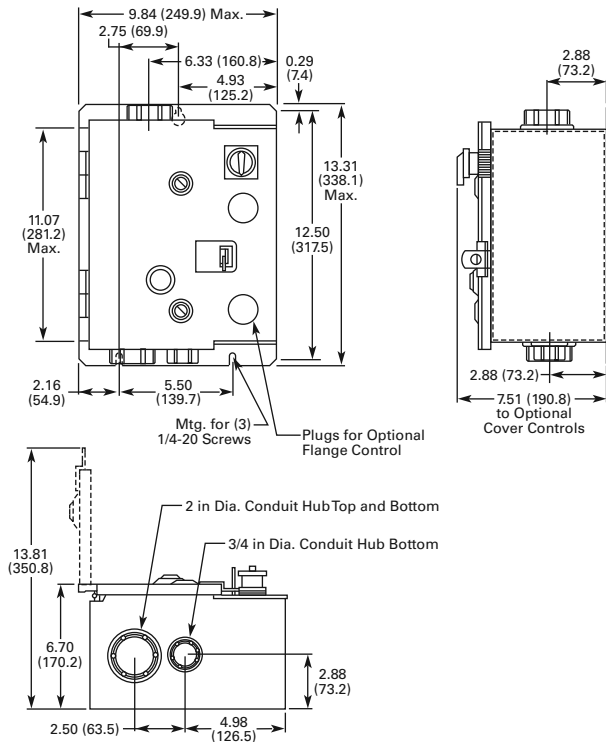
**Box 5, Type 12—9.84W x 13.31H x 6.70D**



**Box 5, Type 3R—9.84W x 13.31H x 6.70D**

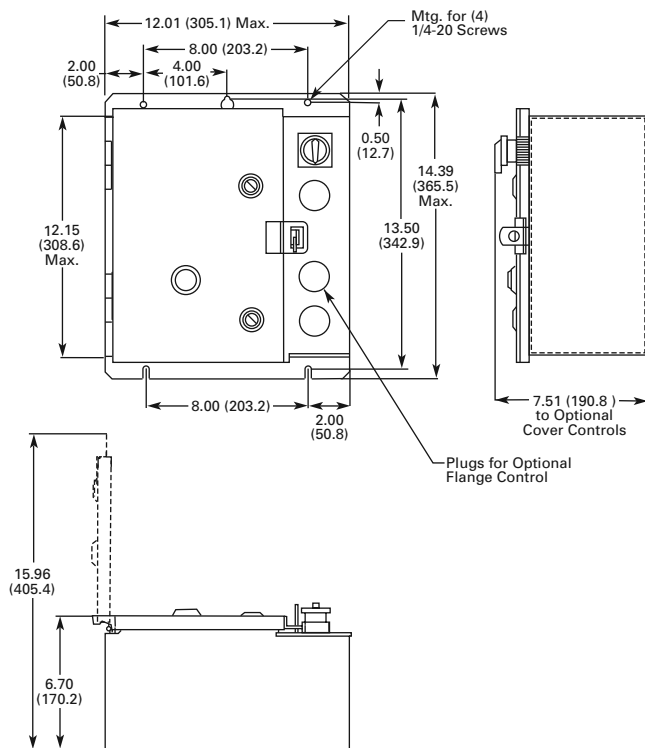


**Box 5, Type 4X—9.84W x 13.31H x 6.70D**

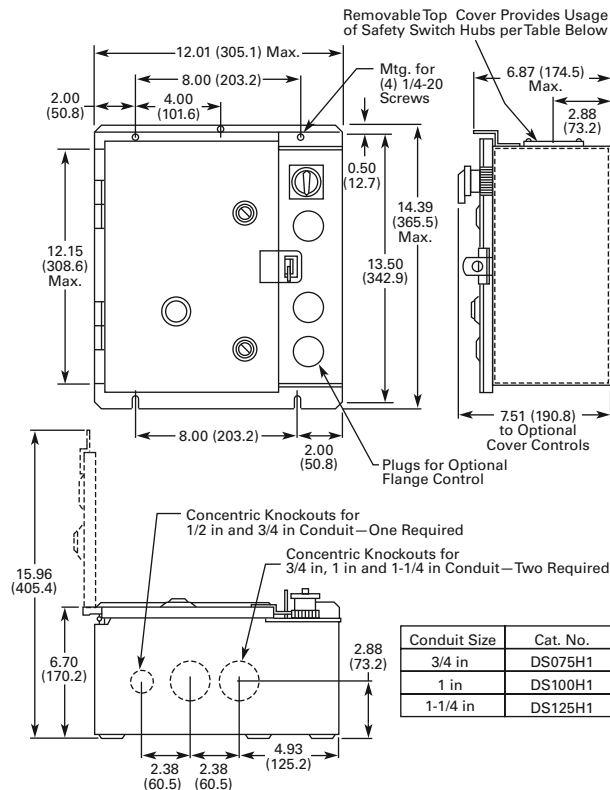


Approximate Dimensions are in Inches (mm)

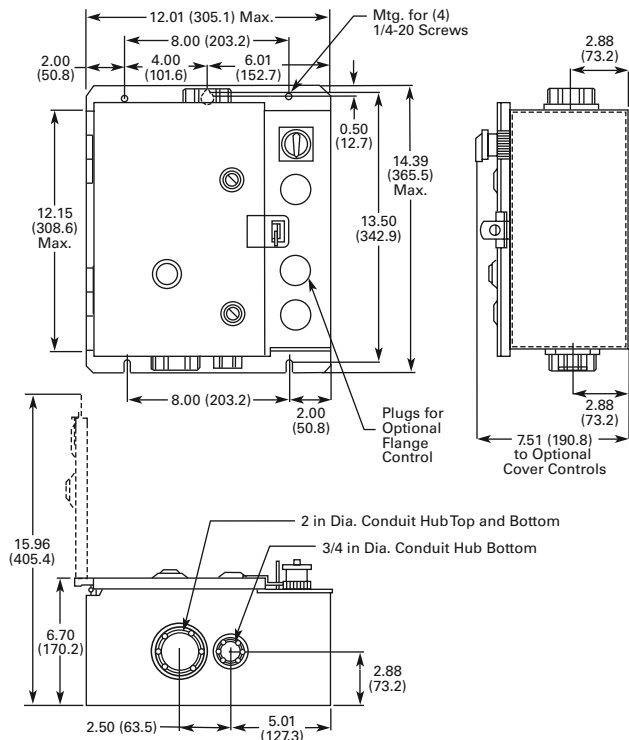
**Box 6, Type 12—12.01W x 14.39H x 6.70D**



**Box 6, Type 3R—12.01W x 14.39H x 6.70D**



**Box 6, Type 4X—12.01W x 14.39H x 6.70D**

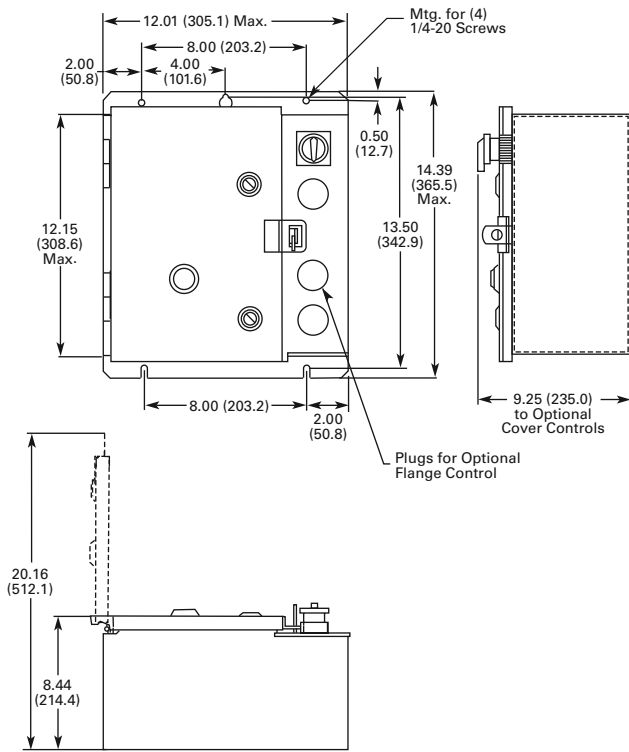


# 14.2 Enclosed Dimensions

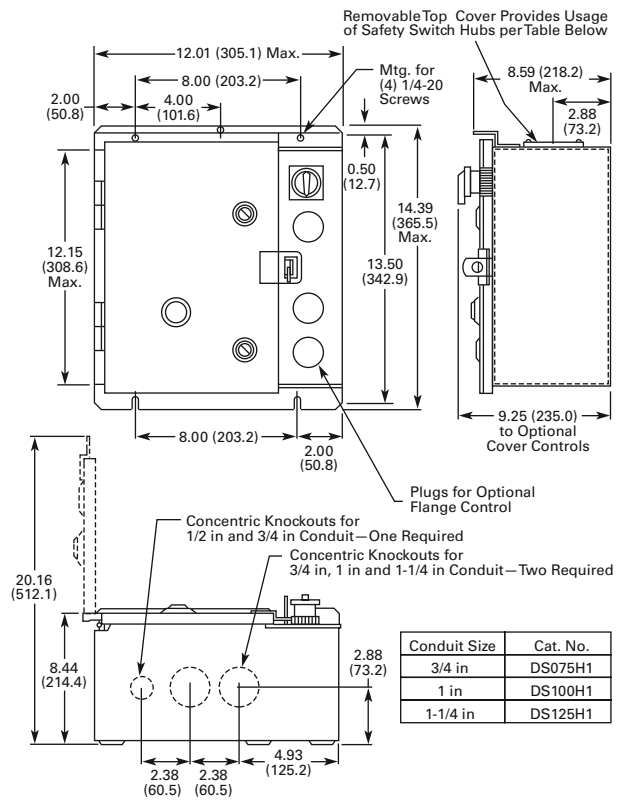
## Box Dimensions

Approximate Dimensions are in Inches (mm)

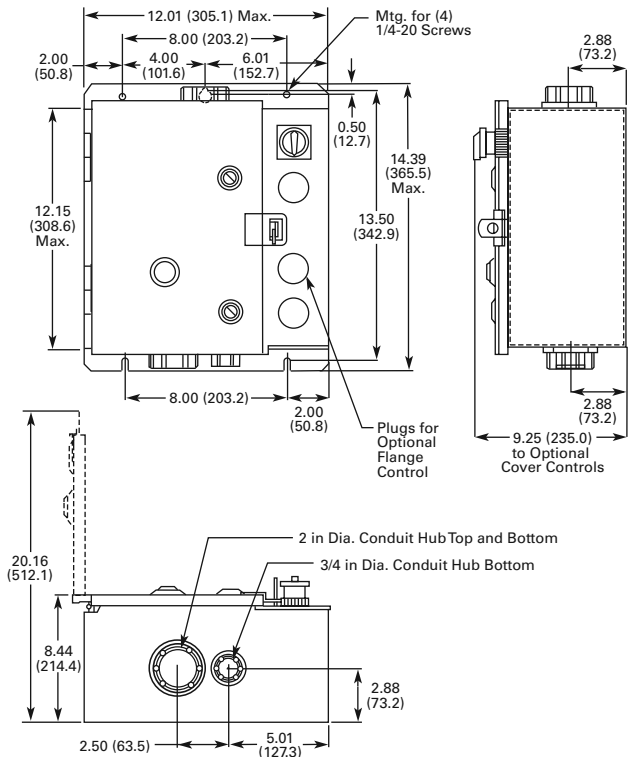
**Box 6A, Type 12—12.01W x 14.39H x 8.44D**



**Box 6A, Type 3R—12.01W x 14.39H x 8.44D**

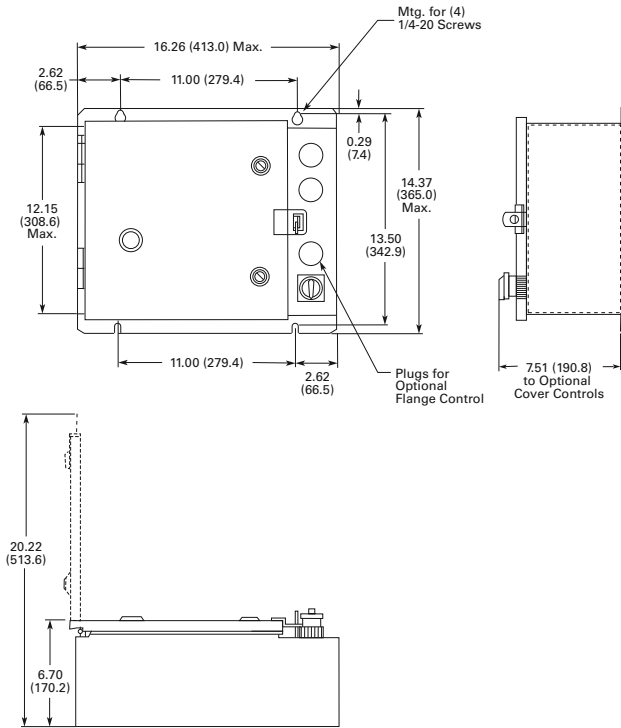


**Box 6A, Type 4X—12.01W x 14.39H x 8.44D**

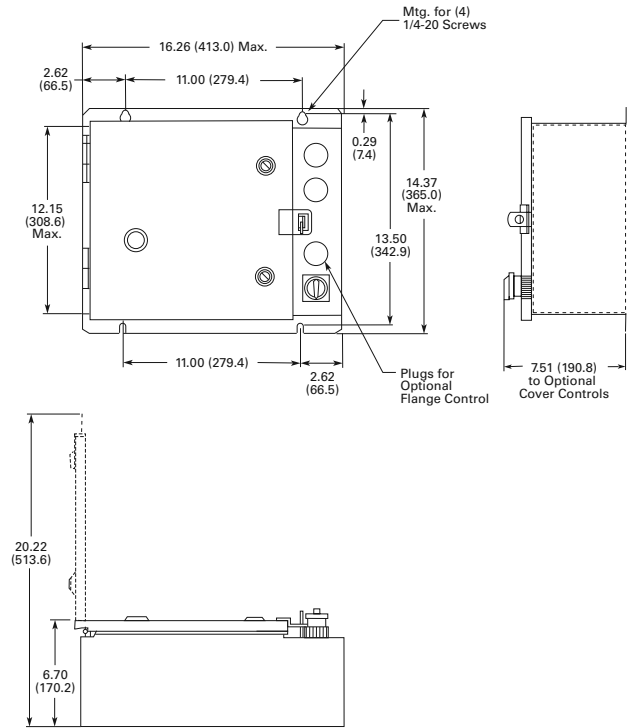


Approximate Dimensions are in Inches (mm)

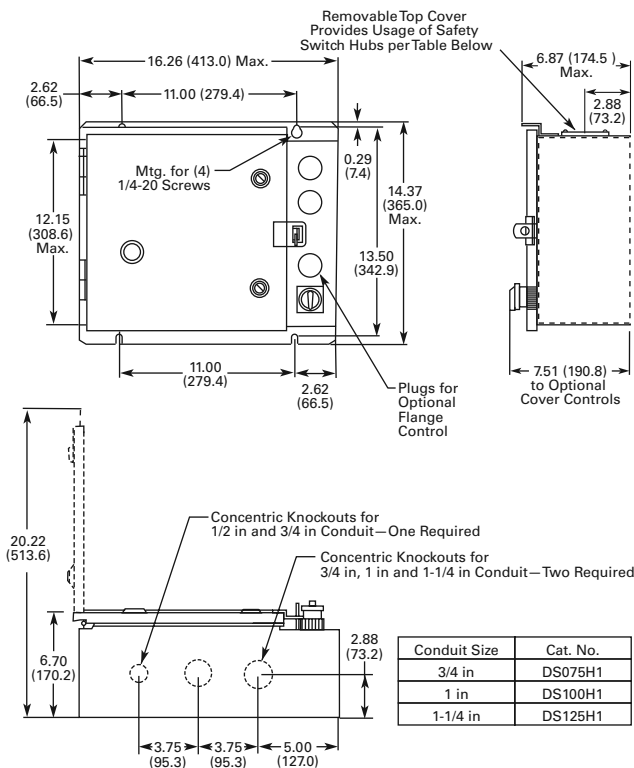
**Box 7, Type 1—16.26W x 14.37H x 6.70D**



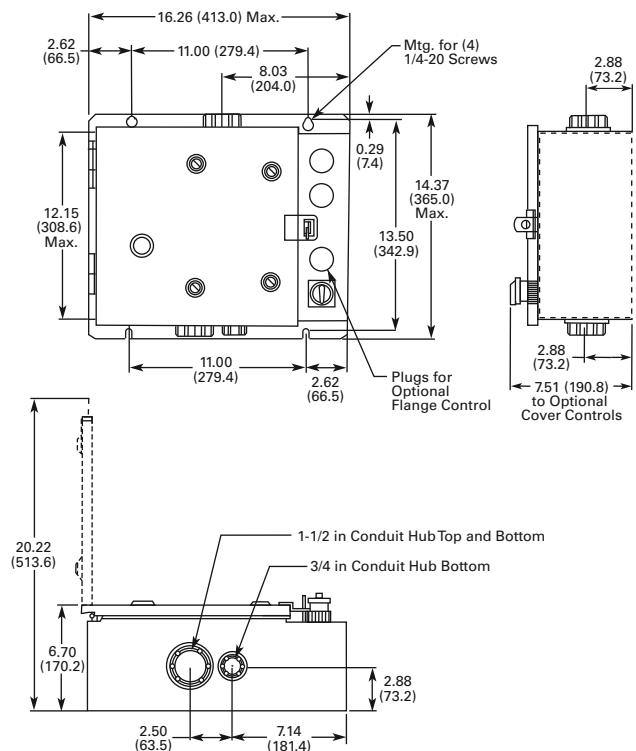
**Box 7, Type 12—16.26W x 14.37H x 6.70D**



**Box 7, Type 3R—16.26W x 14.37H x 6.70D**



**Box 7, Type 4X—16.26W x 14.37H x 6.70D**





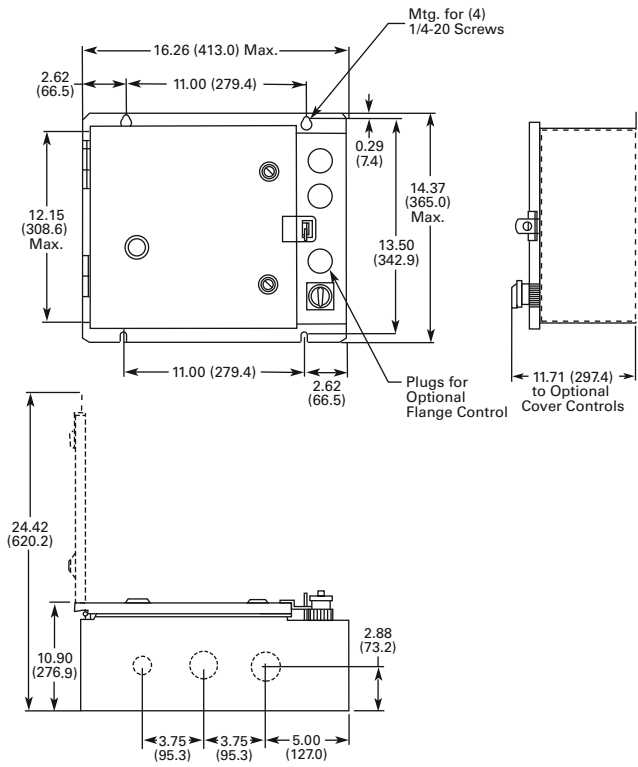
# 14.2

## Enclosed Dimensions

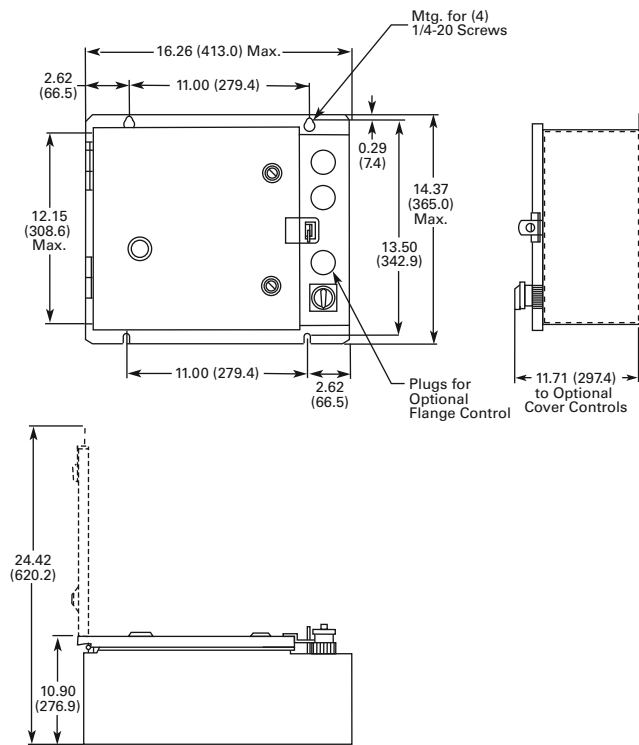
### Box Dimensions

Approximate Dimensions are in Inches (mm)

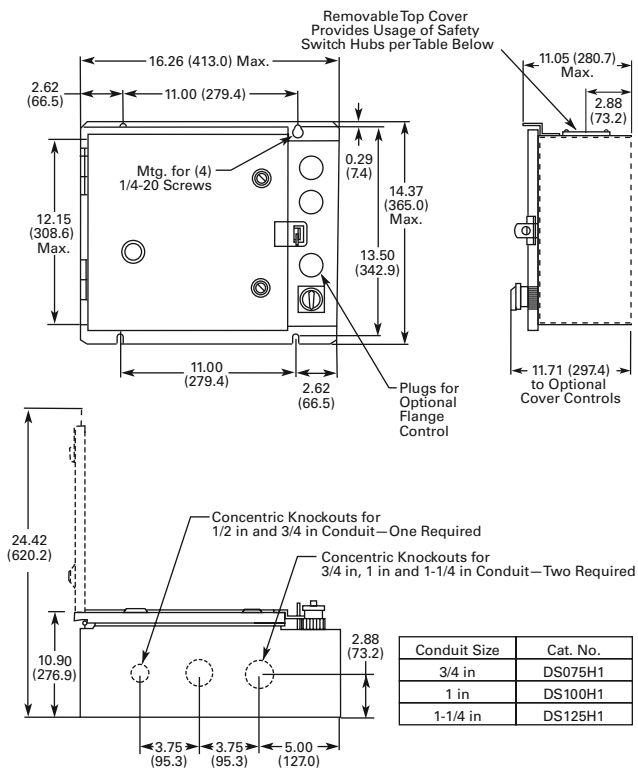
**Box 7A, Type 1—16.26W x 14.37H x 10.90D**



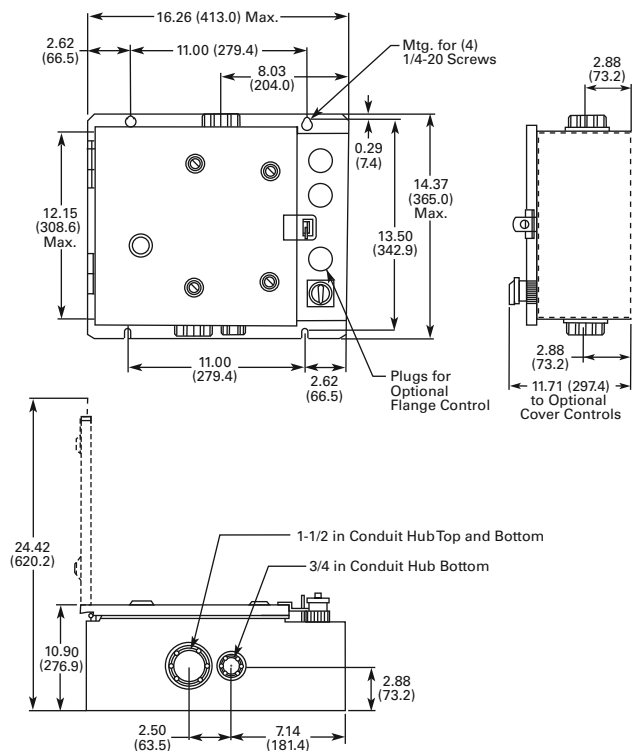
**Box 7A, Type 12—16.26W x 14.37H x 10.90D**



**Box 7A, Type 3R—16.26W x 14.37H x 10.90D**

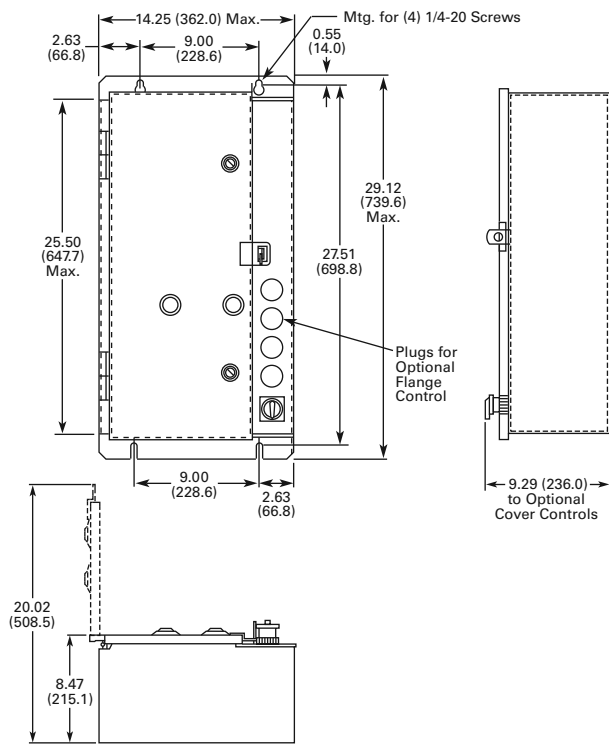


**Box 7A, Type 4X—16.26W x 14.37H x 10.90D**

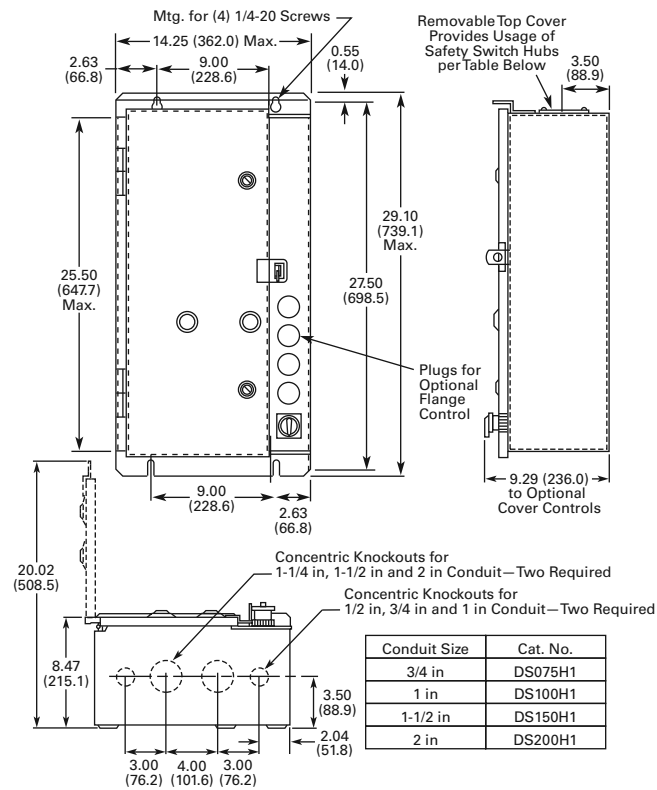


Approximate Dimensions are in Inches (mm)

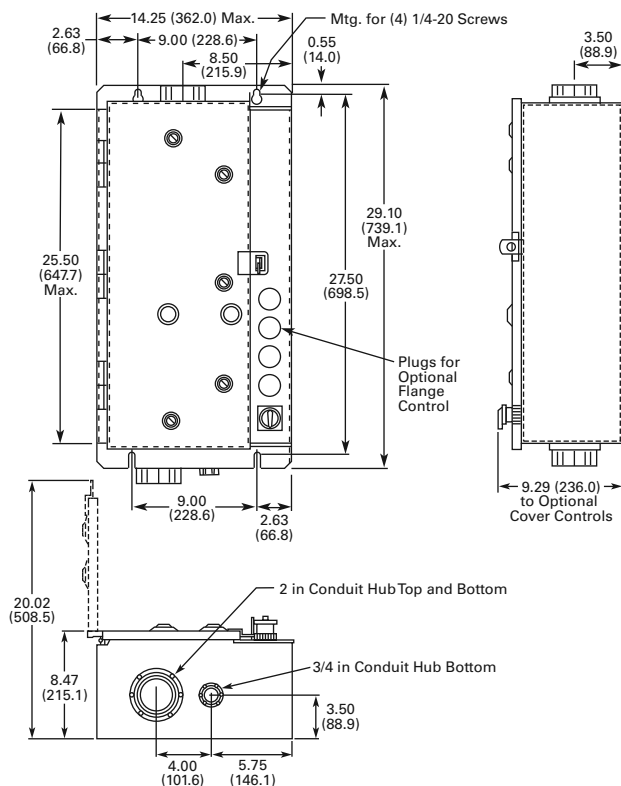
**Box 8, Type 12—14.25W x 29.12H x 8.47D**



**Box 8, Type 3R—14.25W x 29.10H x 8.47D**



**Box 8, Type 4X—14.25W x 29.10H x 8.47D**



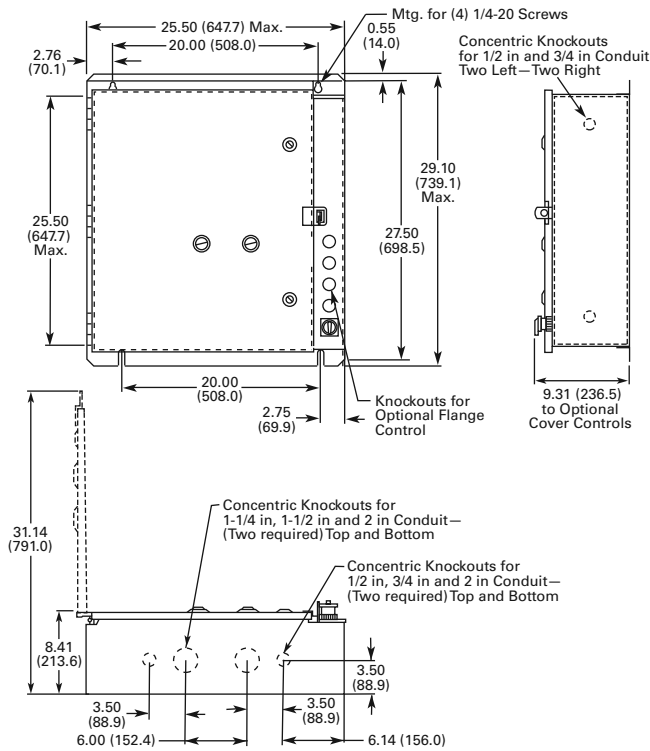
# 14.2

## Enclosed Dimensions

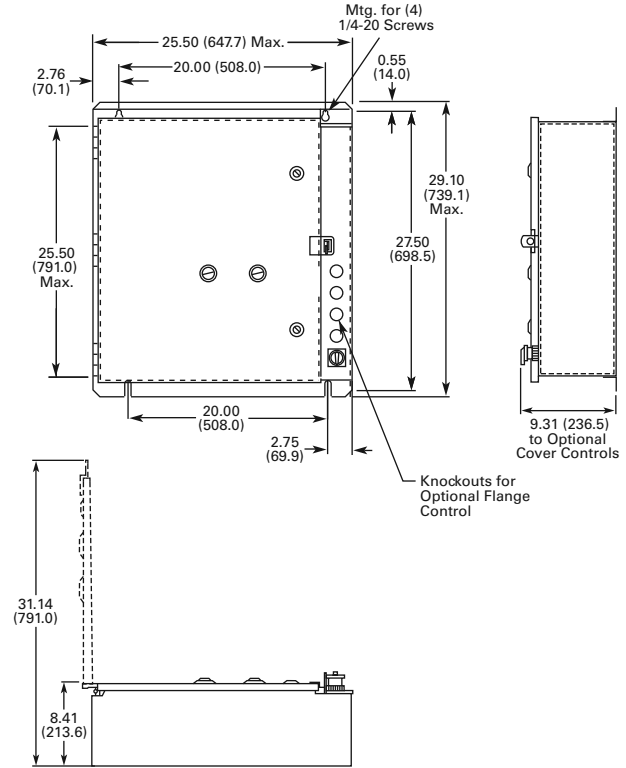
### Box Dimensions

Approximate Dimensions are in Inches (mm)

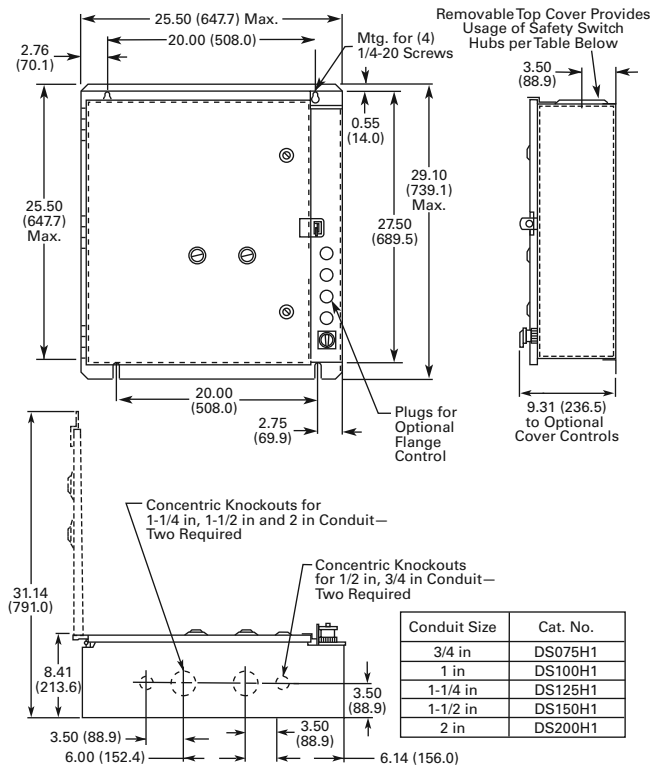
**Box 9, Type 1—25.50W x 29.10H x 8.41D**



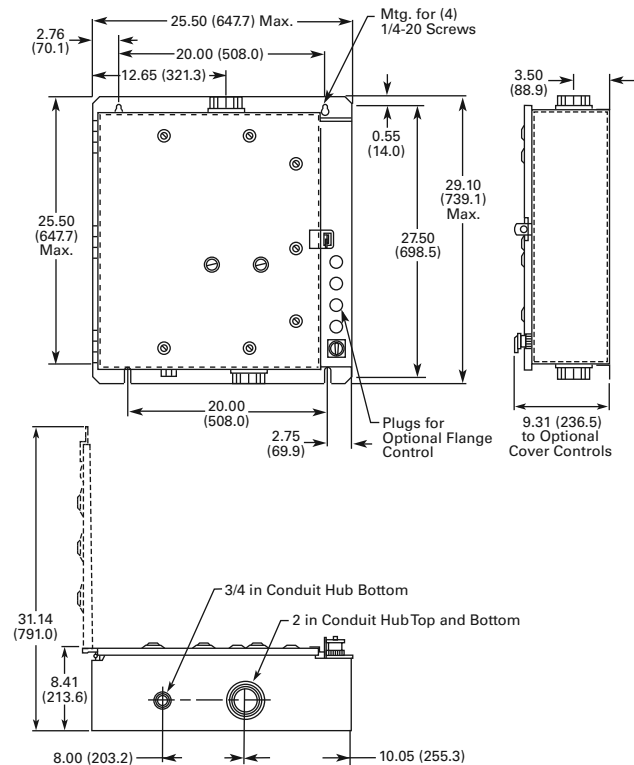
**Box 9, Type 12—25.50W x 29.10H x 8.41D**



**Box 9, Type 3R—25.50W x 29.10H x 8.41D**

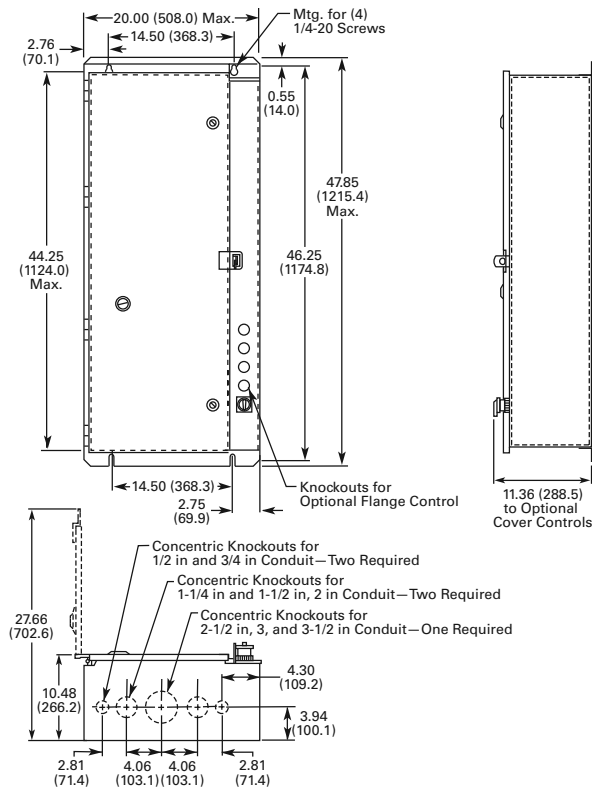


**Box 9, Type 4X—25.50W x 29.10H x 8.41D**

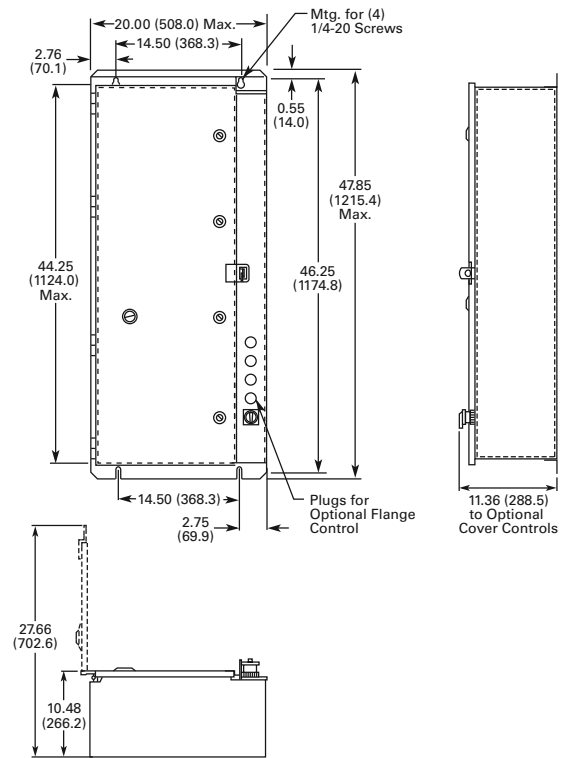


Approximate Dimensions are in Inches (mm)

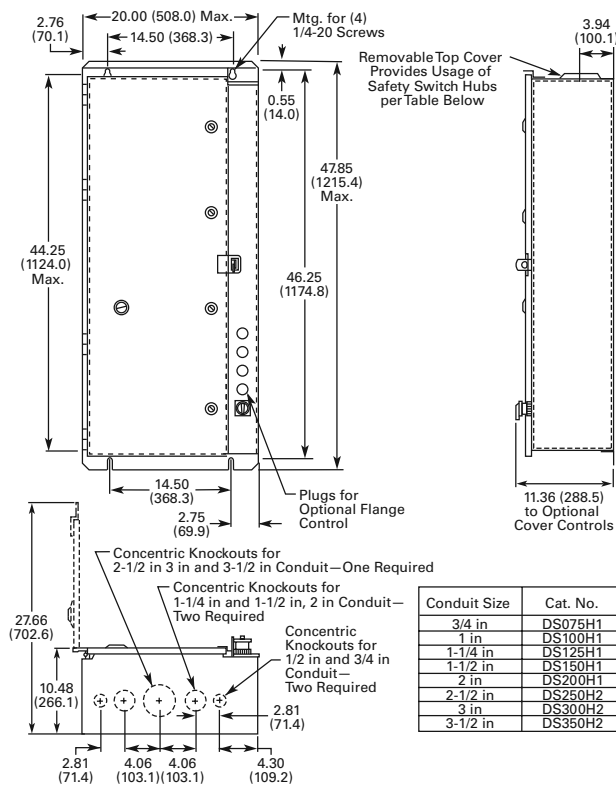
**Box 10, Type 1—20.00W x 47.85H x 10.48D**



**Box 10, Type 12—20.00W x 47.85H x 10.48D**

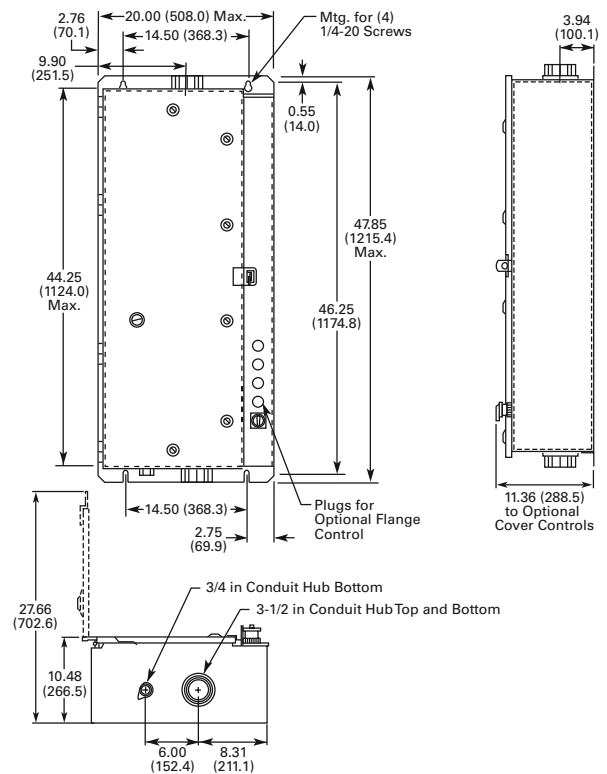


**Box 10, Type 3R—20.00W x 47.85H x 10.48D**



Conduit Size	Cat. No.
3/4 in	DS075H1
1 in	DS100H1
1-1/4 in	DS125H1
1-1/2 in	DS150H1
2 in	DS200H1
2-1/2 in	DS250H2
3 in	DS300H2
3-1/2 in	DS350H2

**Box 10, Type 4X—20.00W x 47.85H x 10.48D**

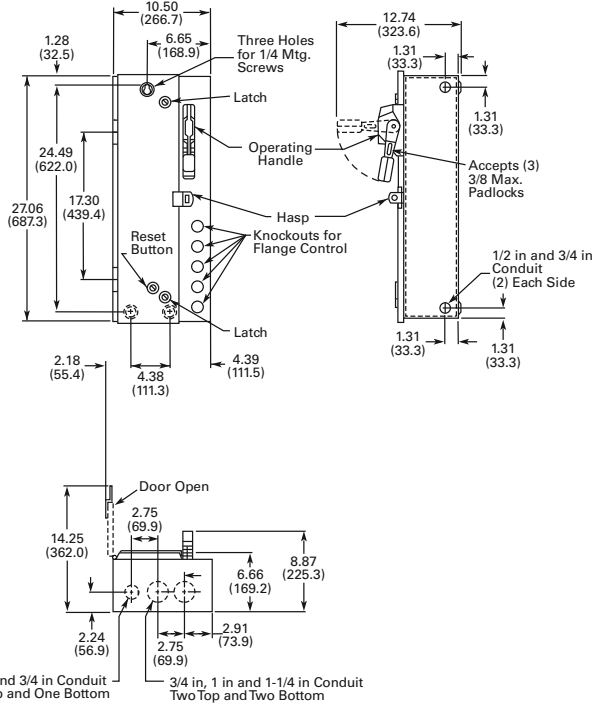


# 14.2 Enclosed Dimensions

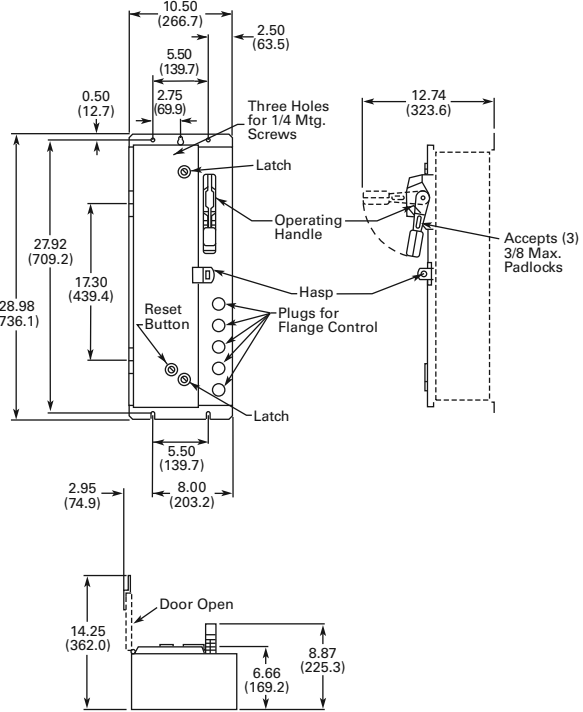
## Box Dimensions

Approximate Dimensions are in Inches (mm)

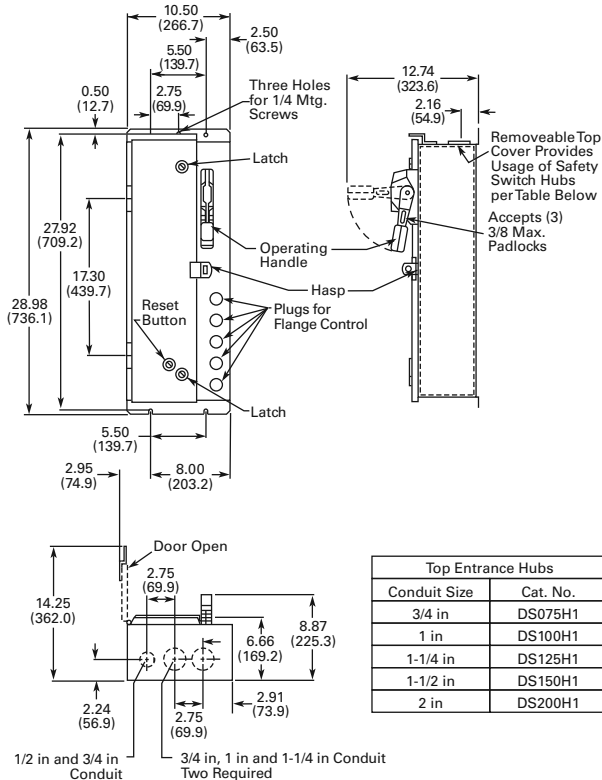
**Box A, Type 1—10.50W x 27.06H x 6.66D**



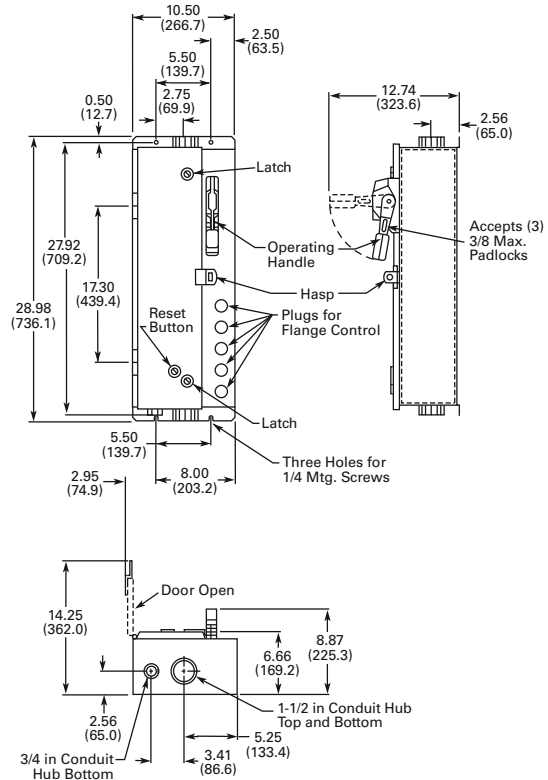
**Box A, Type 12—10.50W x 28.98H x 6.66D**



**Box A, Type 3R—10.50W x 28.98H x 6.66D**

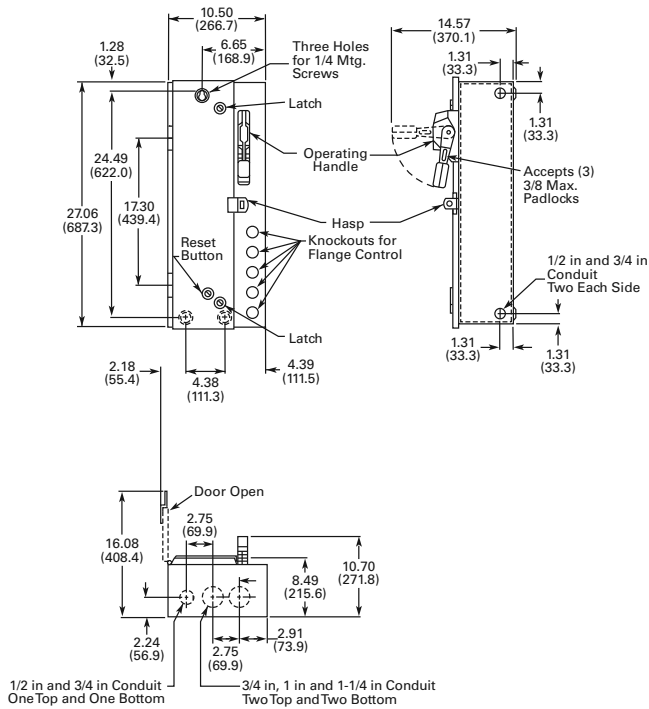


**Box A, Type 4X—10.50W x 28.98H x 6.66D**

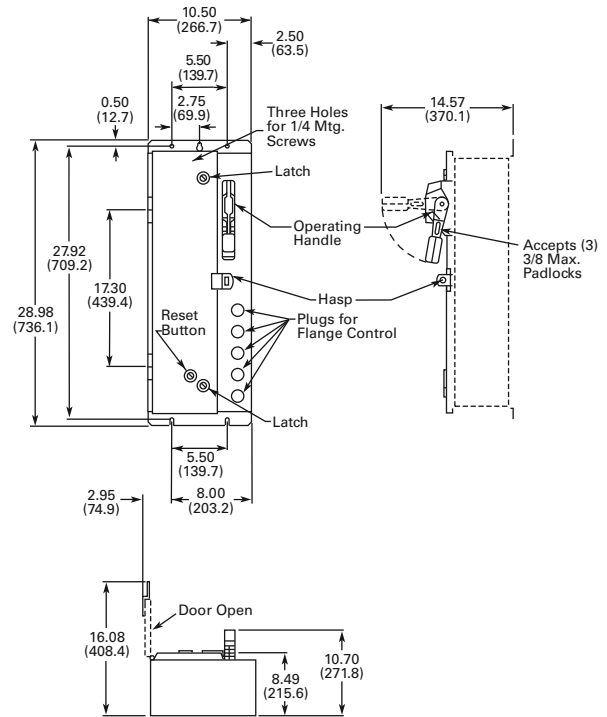


Approximate Dimensions are in Inches (mm)

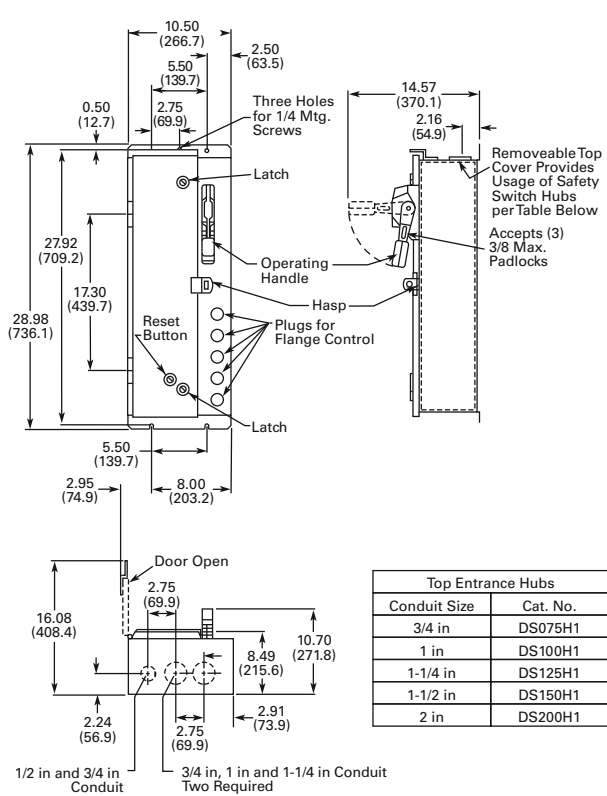
**Box A1, Type 1—10.50W x 27.06H x 8.49D**



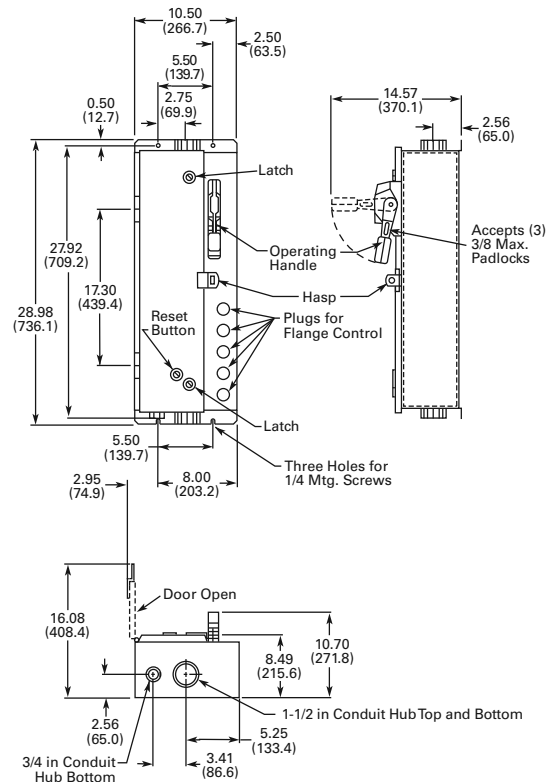
**Box A1, Type 12—10.50W x 28.98H x 8.49D**



**Box A1, Type 3R—10.50W x 28.98H x 8.49D**



**Box A1, Type 4X—10.50W x 28.98H x 8.49D**

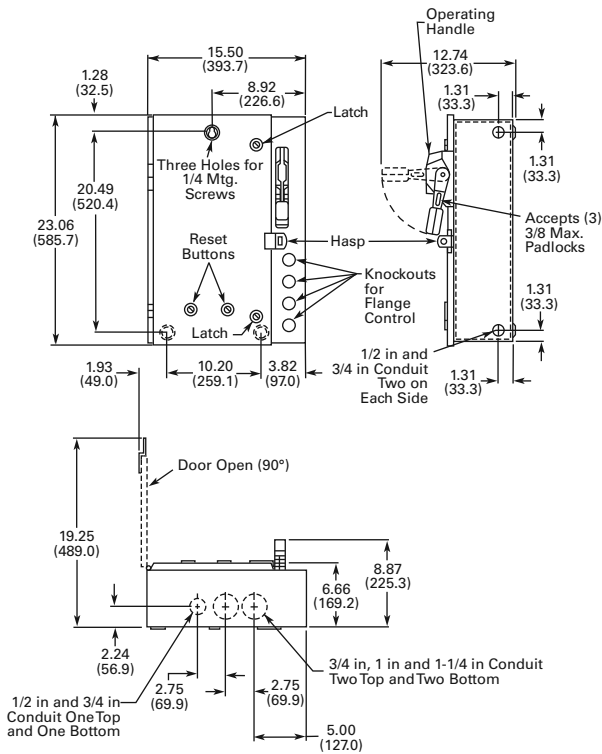


# 14.2 Enclosed Dimensions

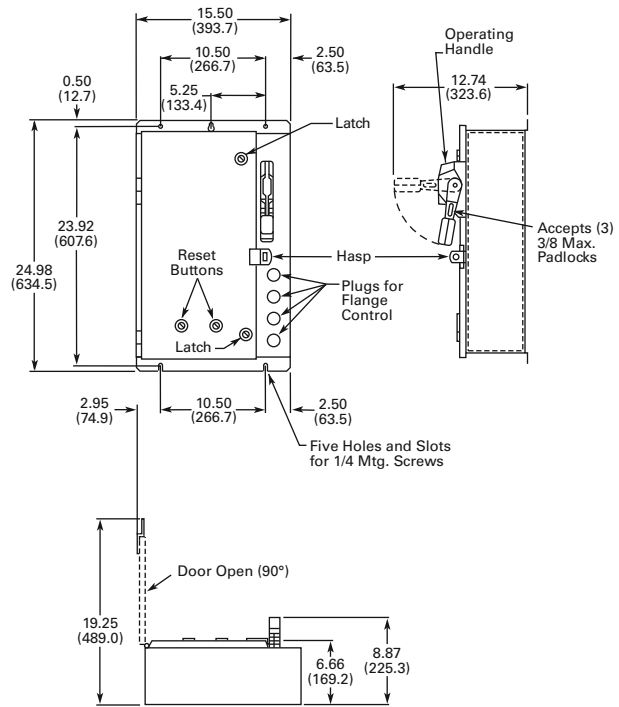
## Box Dimensions

Approximate Dimensions are in Inches (mm)

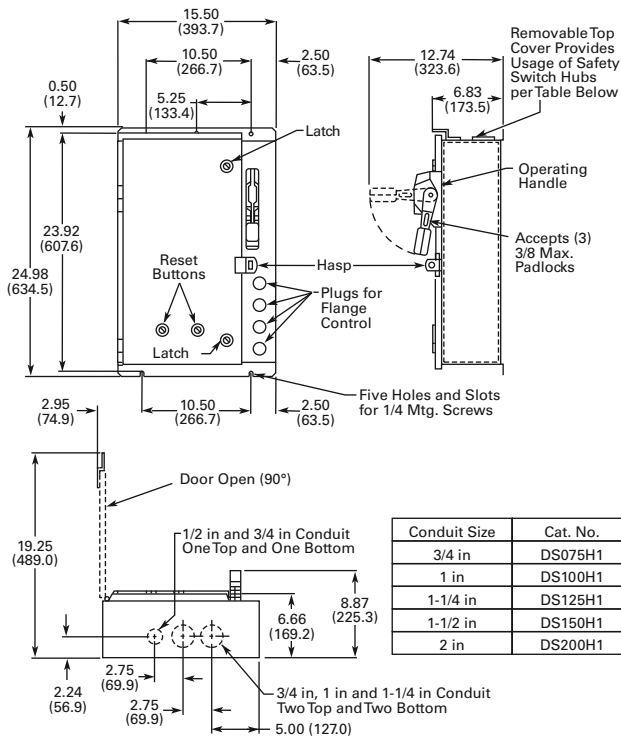
**Box B, Type 1—15.50W x 23.06H x 6.66D**



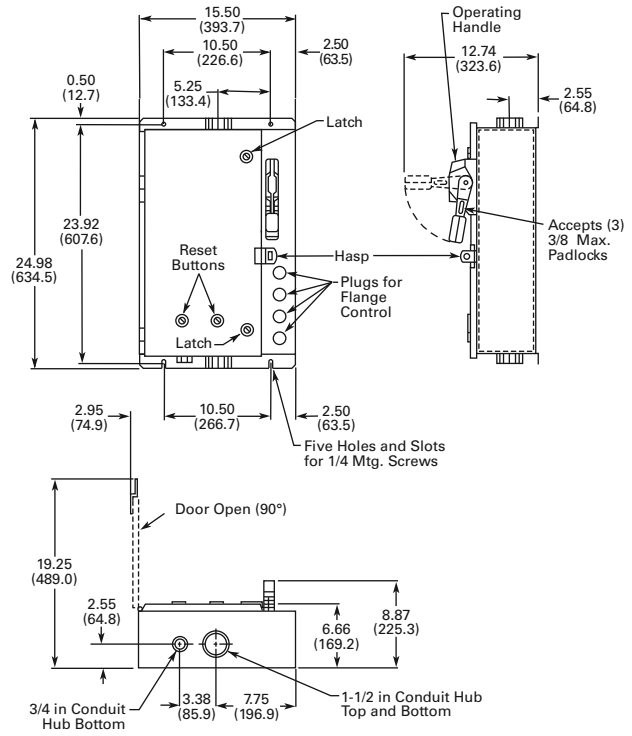
**Box B, Type 12—15.50W x 24.98H x 6.66D**



**Box B, Type 3R—15.50W x 24.98H x 6.66D**

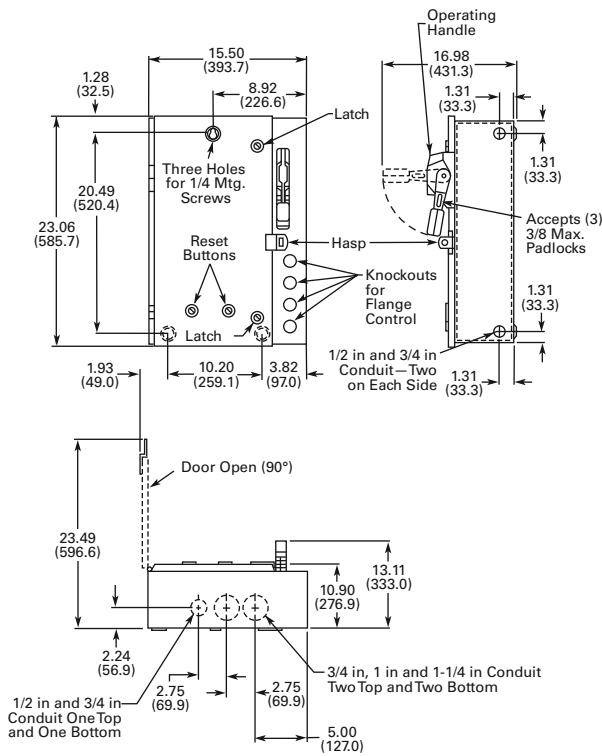


**Box B, Type 4X—15.50W x 24.98H x 6.66D**

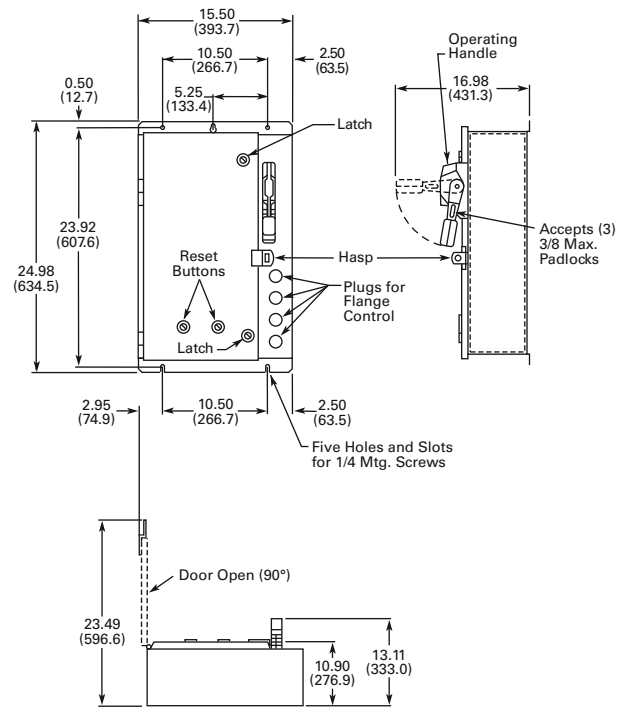


Approximate Dimensions are in Inches (mm)

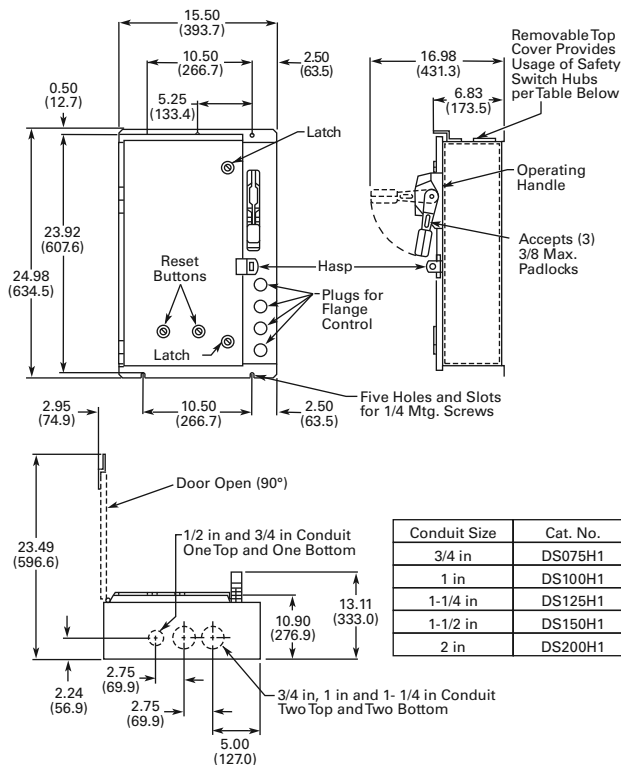
**Box B1, Type 1—15.50W x 23.06H x 10.90D**



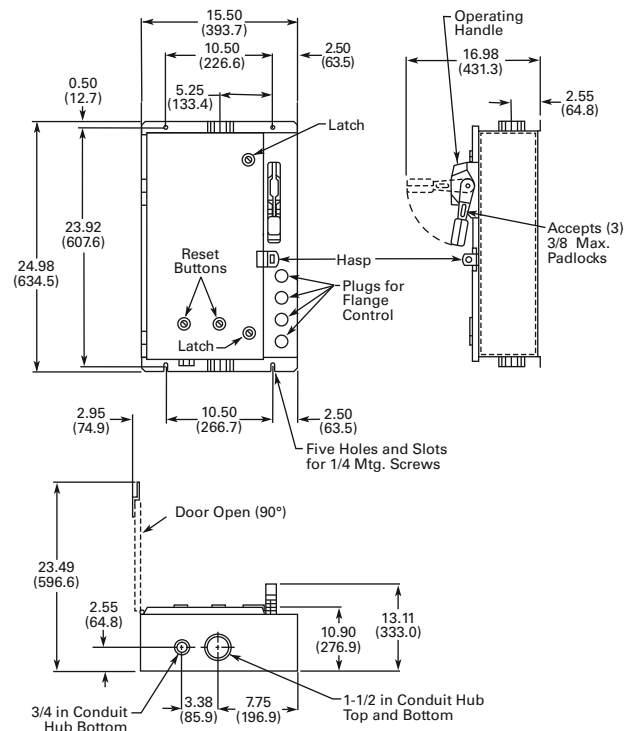
**Box B1, Type 12—15.50W x 24.98H x 10.90D**



**Box B1, Type 3R—15.50W x 24.98H x 10.90D**



**Box B1, Type 4X—15.50W x 24.98H x 10.90D**



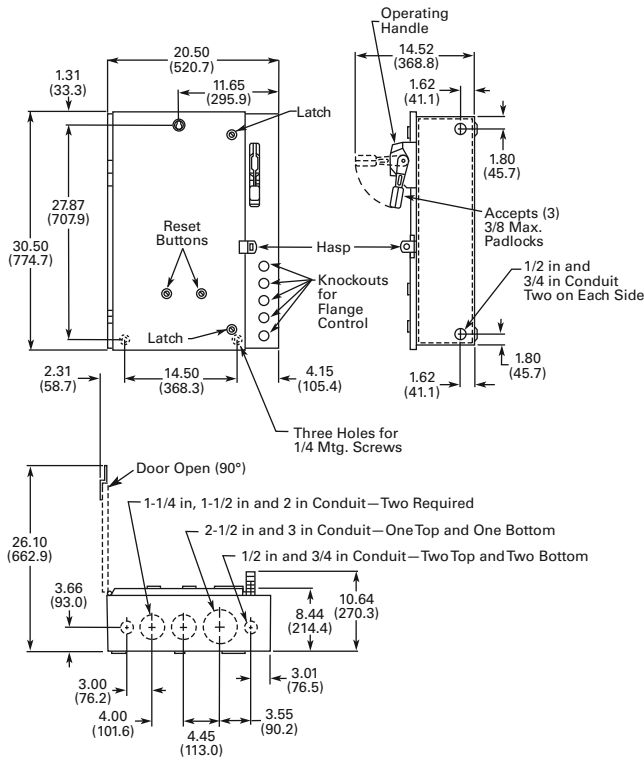


# 14.2 Enclosed Dimensions

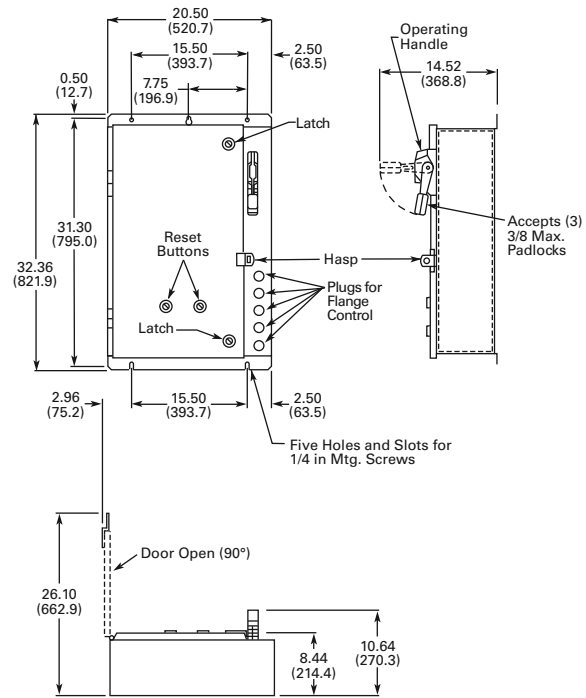
## Box Dimensions

Approximate Dimensions are in Inches (mm)

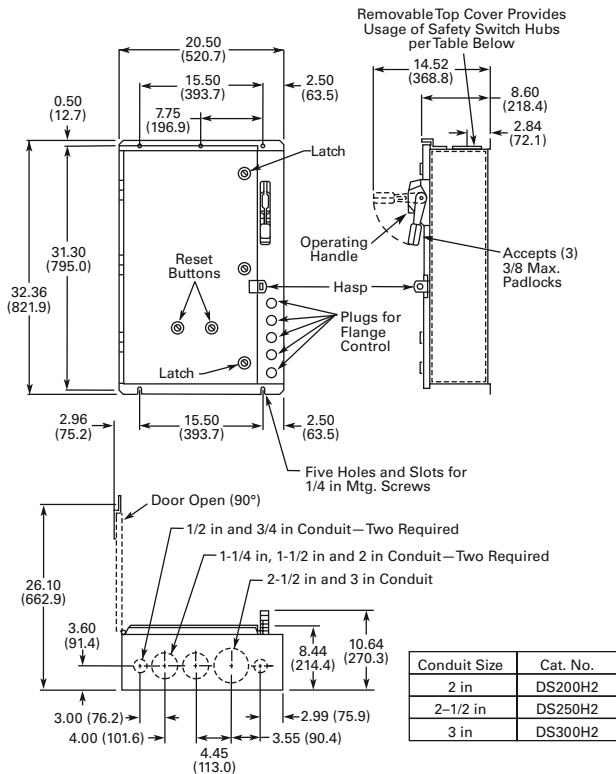
**Box C, Type 1—20.50W x 30.50H x 8.44D**



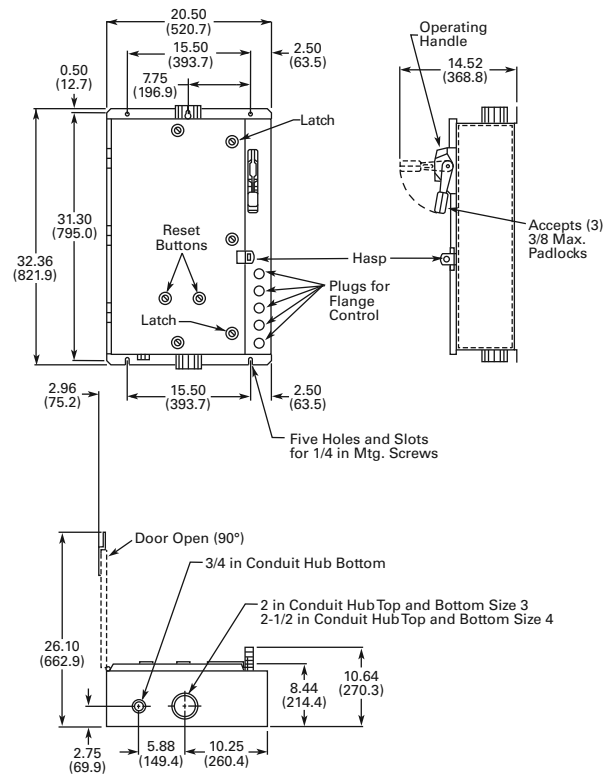
**Box C, Type 12—20.50W x 32.36H x 8.44D**



**Box C, Type 3R—20.50W x 32.36H x 8.44D**

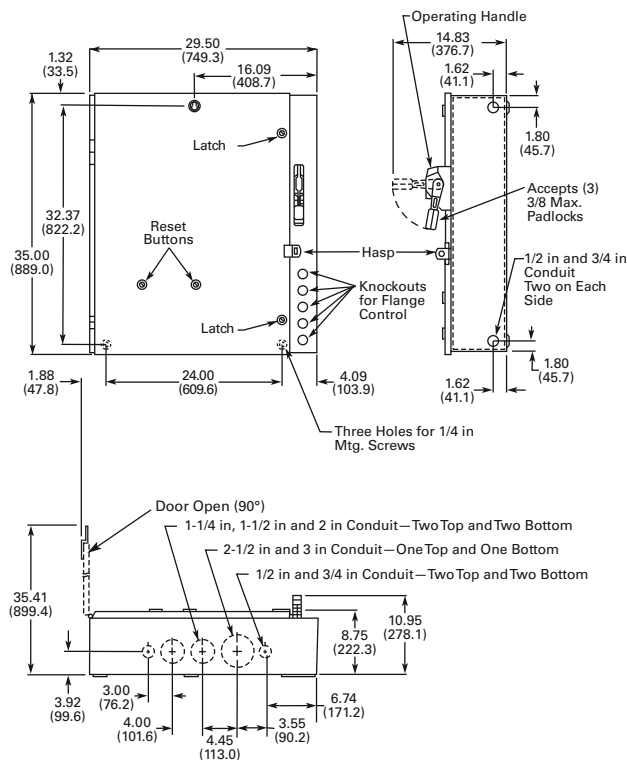


**Box C, Type 4X—20.50W x 32.36H x 8.44D**

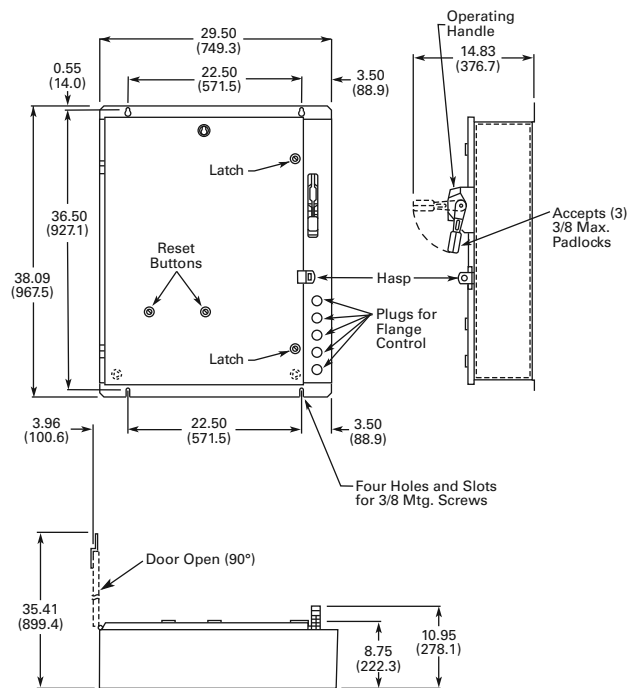


Approximate Dimensions are in Inches (mm)

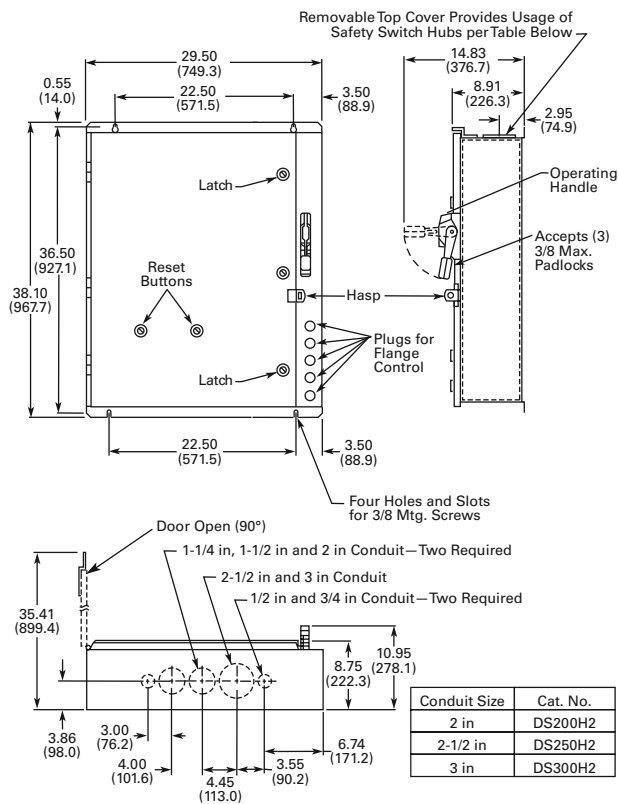
**Box D, Type 1—29.50W x 35.00H x 8.75D**



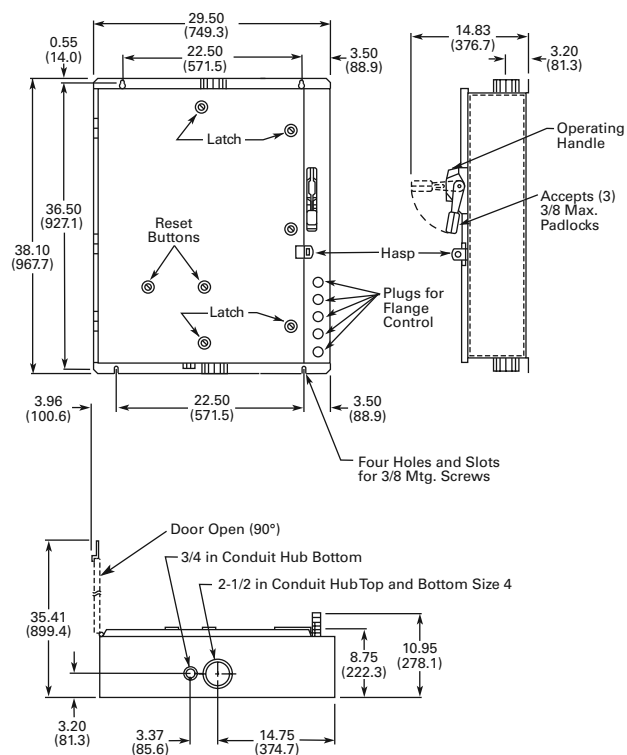
**Box D, Type 12—29.50W x 38.09H x 8.75D**



**Box D, Type 3R—29.50W x 38.10H x 8.75D**



**Box D, Type 4X—29.50W x 38.10H x 8.75D**

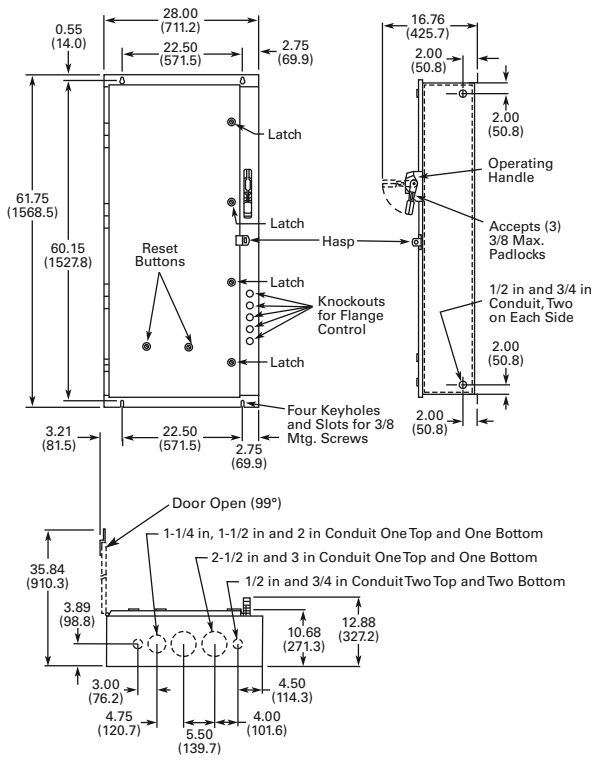


# 14.2 Enclosed Dimensions

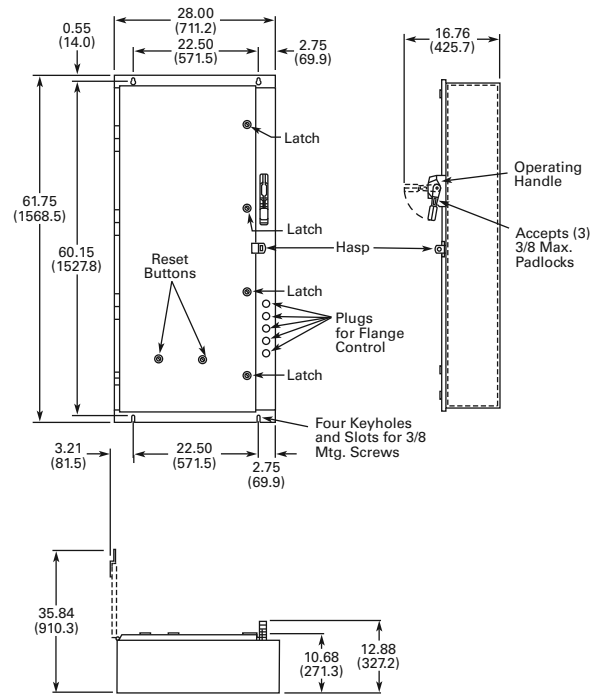
## Box Dimensions

Approximate Dimensions are in Inches (mm)

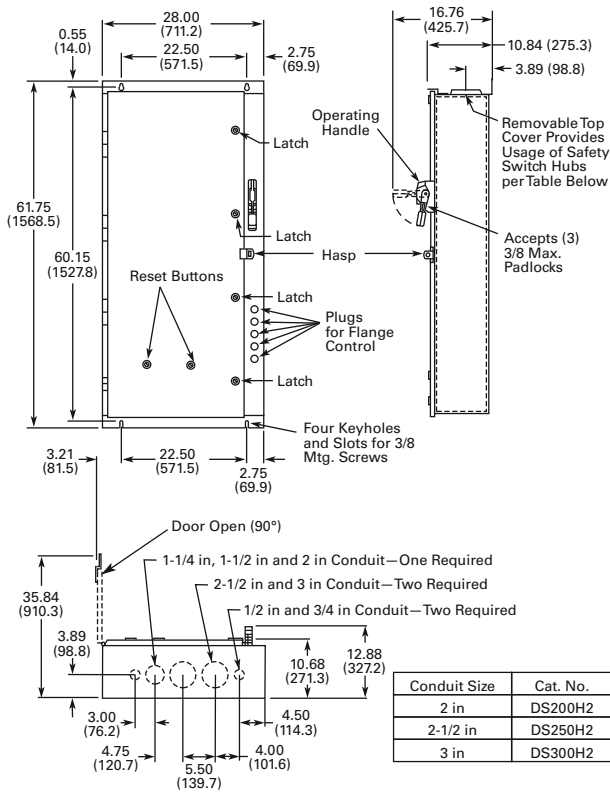
**Box E, Type 1—28.00W x 61.75H x 10.68D**



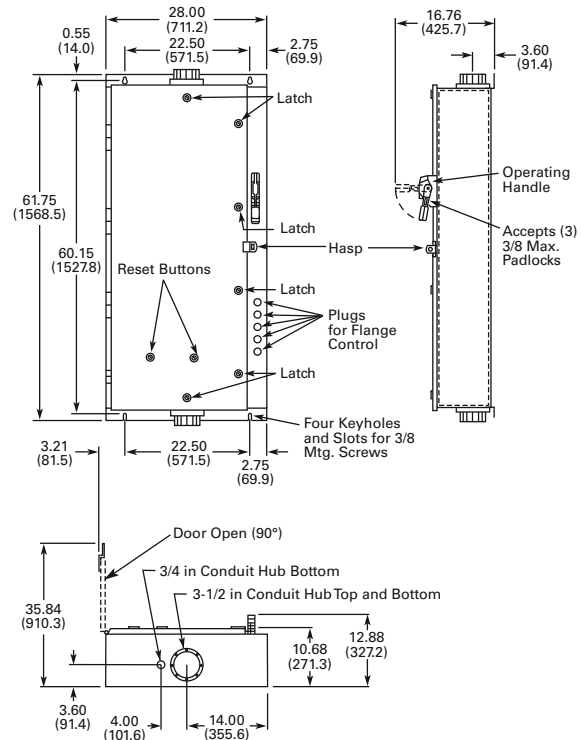
**Box E, Type 12—28.00W x 61.75H x 10.68D**



**Box E, Type 3R—28.00W x 61.75H x 10.68D**

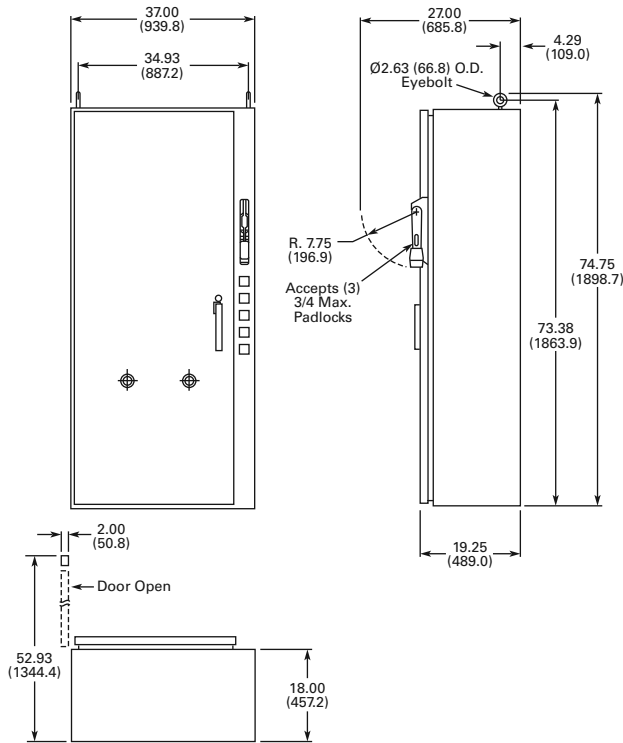


**Box E, Type 4X—28.00W x 61.75H x 10.68D**

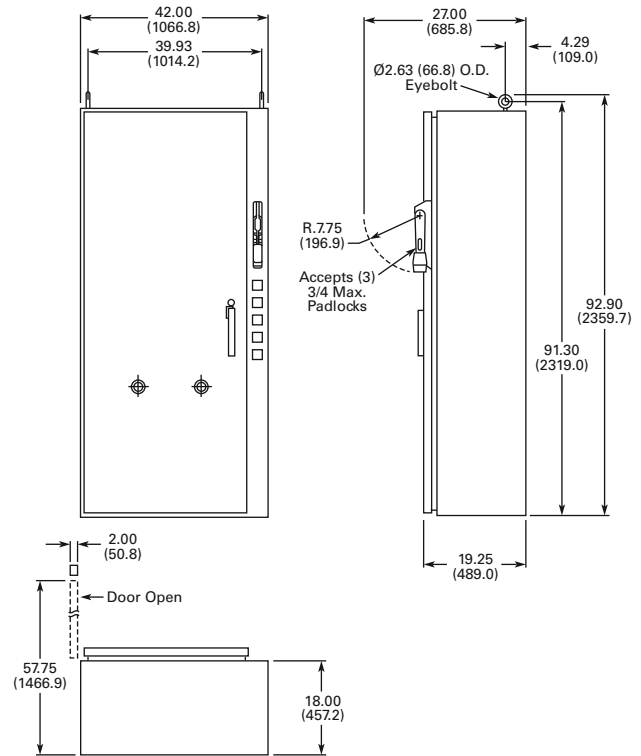


Approximate Dimensions are in Inches (mm)

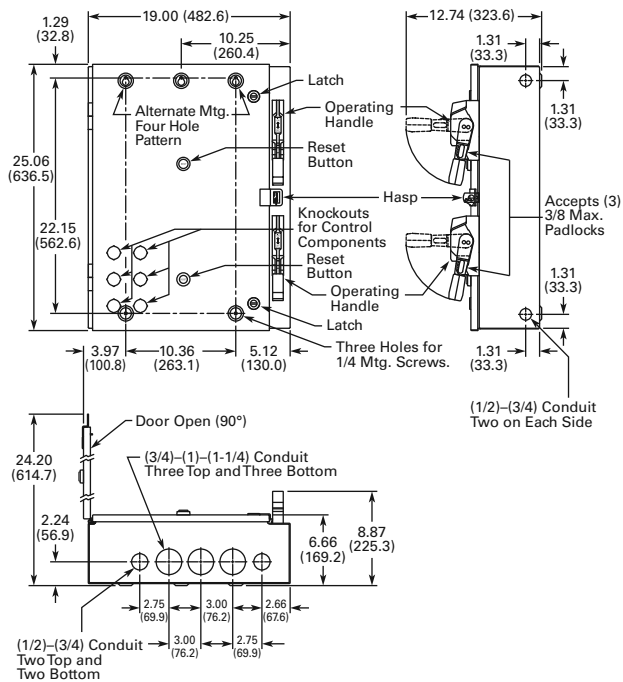
**Box F1E, Type 1/3R/4/12—37.00W x 74.75H x 19.25D**



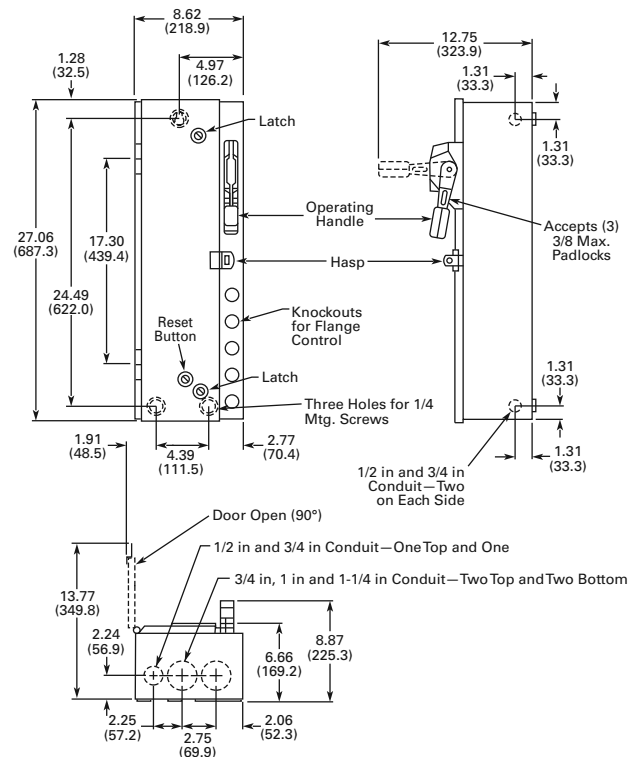
**Box F2E, Type 1/3R/4/12—42.00W x 92.90H x 19.25D**



**Box H, Type 1—19.00W x 25.06H x 6.66D**



**Box I, Type 1—8.62W x 27.06H x 6.66D** ①



**Note**

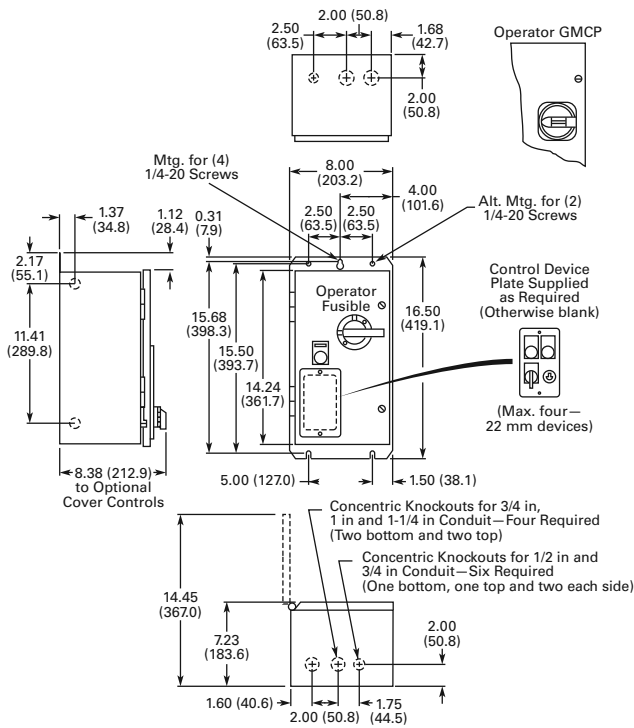
① Knockouts are not supplied for Type 12; all other dimensions apply.

# 14.2 Enclosed Dimensions

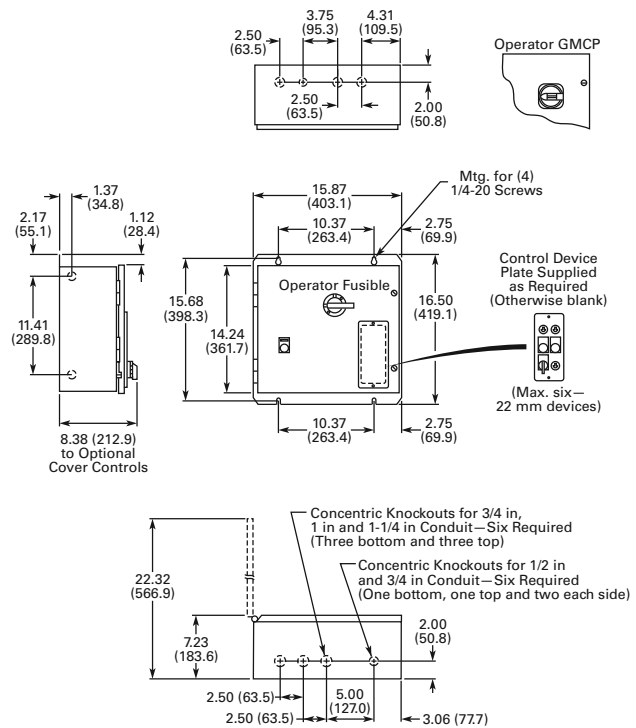
## Box Dimensions

Approximate Dimensions are in Inches (mm)

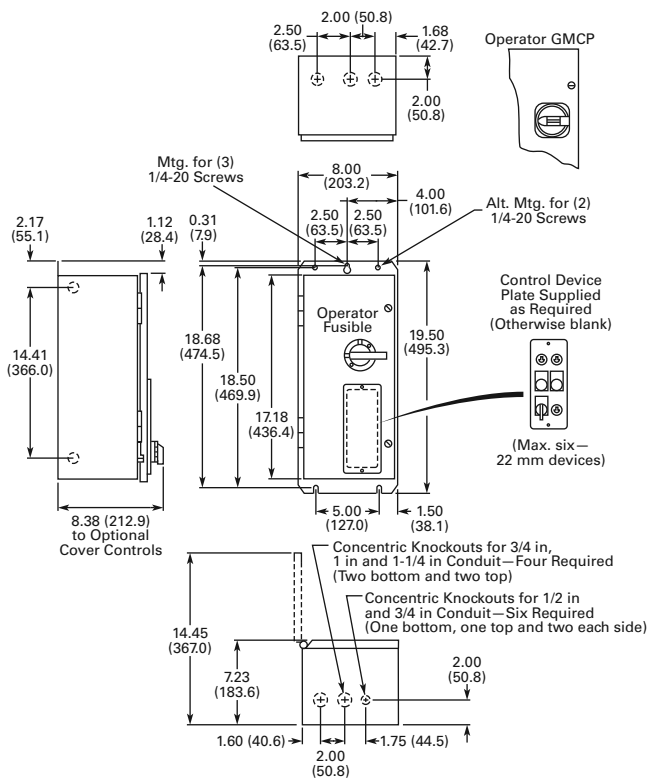
**Box J—8.00W x 16.50H x 7.23D** ①



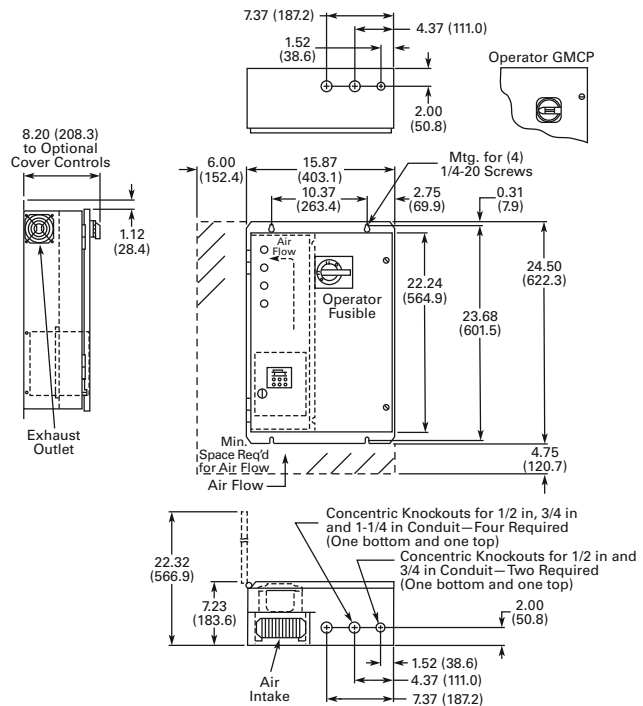
**Box L—15.87W x 16.50H x 7.23D** ①



**Box K—8.00W x 19.50H x 7.23D**



**Box M, Type 1/12—15.87W x 24.50H x 7.23D** ②③

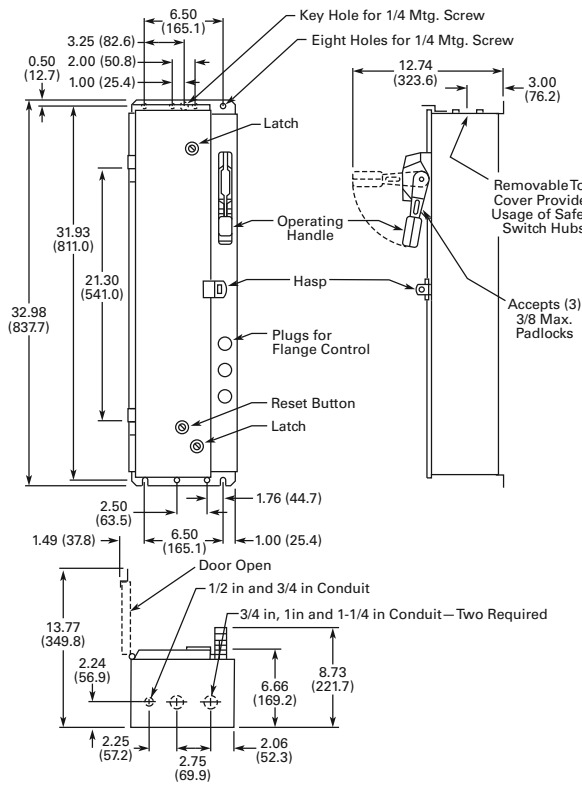


**Notes**

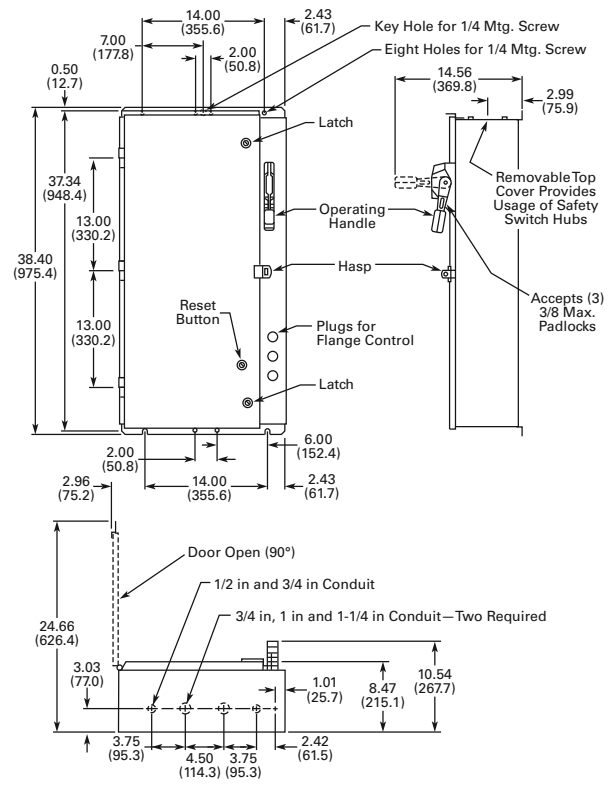
- ① Knockouts are not supplied for Type 12 or 3R types; all other dimensions apply. Consult factory for Type 4X.
- ② Knockouts are not supplied for Type 12; all other dimensions apply.
- ③ For Type 12, clear lens provided.

Approximate Dimensions are in Inches (mm)

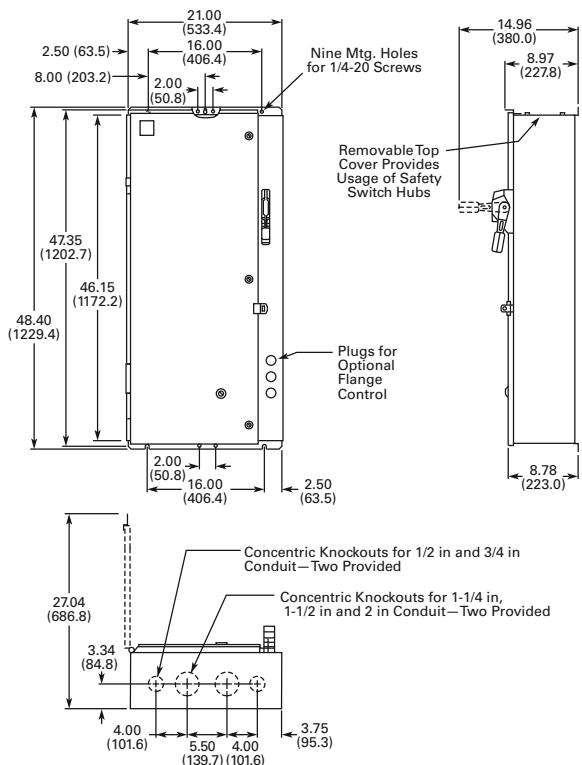
**Box P1—8.50W x 32.98H x 6.66D**



**Box P3—18.86W x 38.40H x 8.47D**



**Box P5—21.00W x 48.40H x 8.97D**



**Box P7—28.00W x 60.58H x 10.68D**

